



Eccleston Square, SW1V

£750,000

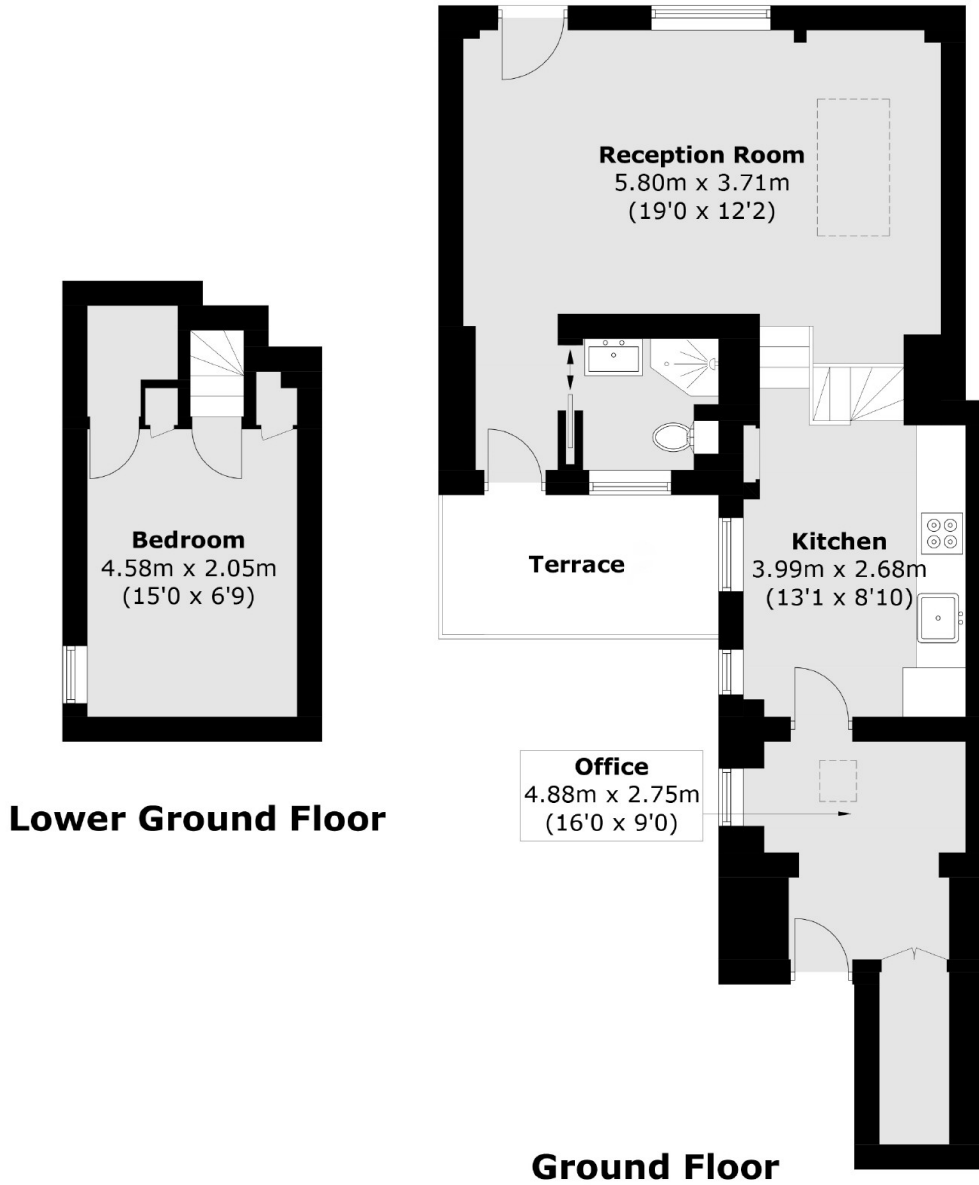
A beautifully presented ground floor one bedroom apartment, positioned in one of the most prestigious and exclusive squares in SW1 conveniently located only a short walk from Victoria station. Offering plenty of living space complemented by a well designed kitchen which flows through to the reception room leading onto a private terrace.

Eccleston Square is conveniently located for close transport links from Victoria Station and Pimlico Underground Station, furthermore the location is within easy reach of the many amenities of Chelsea and Belgravia.

Features

- Access to Eccleston Square
- One Bedroom
- Ground Floor
- Pimlico Grid
- Short walk to Victoria Station
- Private Outside Space

Eccleston Square,
London, SW1V



Total area (approx.): 60.0 sq. m (645.9 sq. ft)
Terrace area (approx.): 3.7 sq. m (39.9 sq. ft)