



Greycoat Gardens, SW1P

£930,000

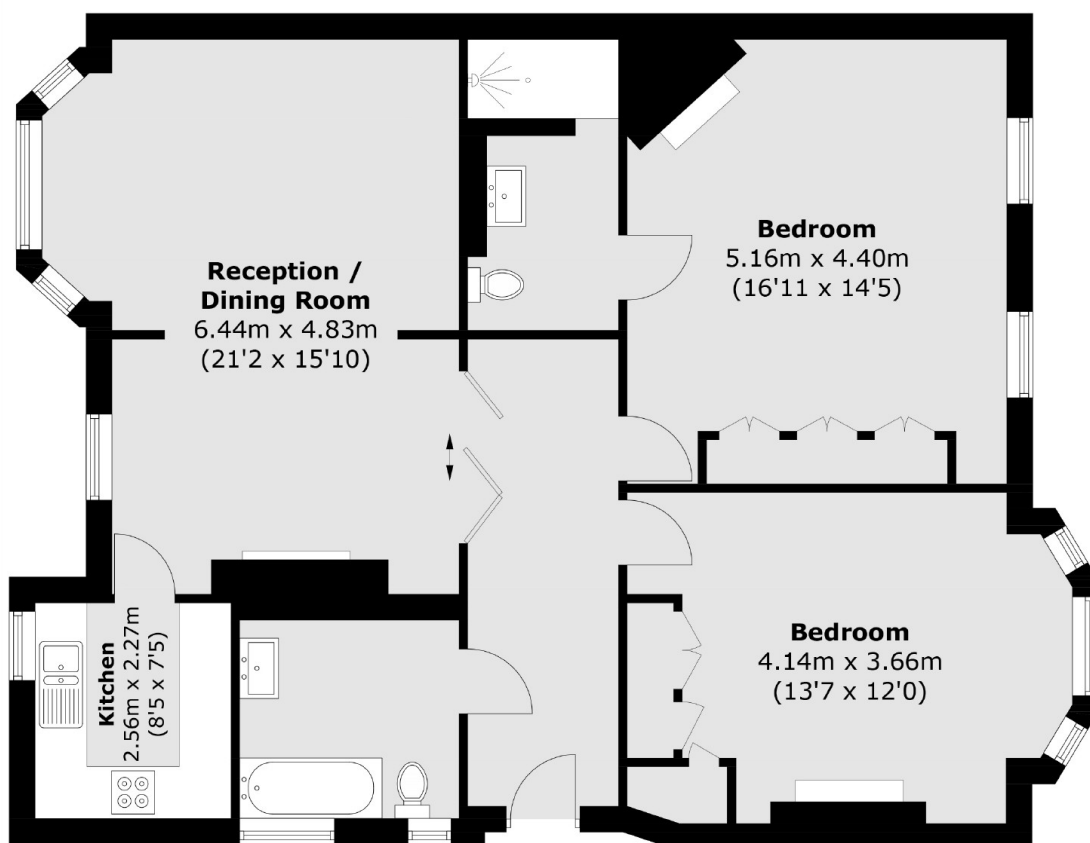
A well proportioned, immaculately presented two bedroom, two bathroom apartment position within the heart of Westminster. Offering close to a 1100sqft of living space, this Victorian Mansion block consists of separate dining & reception room, a smart kitchen and two double bedrooms with en-suite.

Ideally situated for the shops, cafés and restaurants of Westminster and Victoria. St James's Park and Victoria Station are both just a walk away.

Features

- Victorian Style Mansion Block
- Two Double Bedrooms
- Share of Freehold
- Two Bathrooms
- High Ceilings
- Caretaker

Greycoat Gardens, London, SW1P



Total area (approx.): 99.6 sq. m (1,071.8 sq. ft)

Dexters

Westminster
50 Churton Street
London
SW1V 2LP
Sales
020 7590 9570

Energy Rating: D. We aim to make our particulars both accurate and reliable. However they are not guaranteed; nor do they form part of an offer or contract. If you require clarification on any points then please contact us, especially if you're traveling some distance to view. Please note that appliances and heating systems have not been tested and therefore no warranties can be given as to their good working order.

 **RICS** | Regulated
Estate Agent
and Letting Agent

[dexters.co.uk](https://www.dexters.co.uk)