



Greycoat Gardens, SW1P

£975,000

A well proportioned, immaculately presented two bedroom, two bathroom apartment position within the heart of Westminster. Offering close to a 1100sqft of living space, this Victorian Mansion block consists of separate dining & reception room, a smart kitchen and two double bedrooms with en-suite.

Ideally situated for the shops, cafés and restaurants of Westminster and Victoria. St James's Park and Victoria Station are both just a walk away.

Features

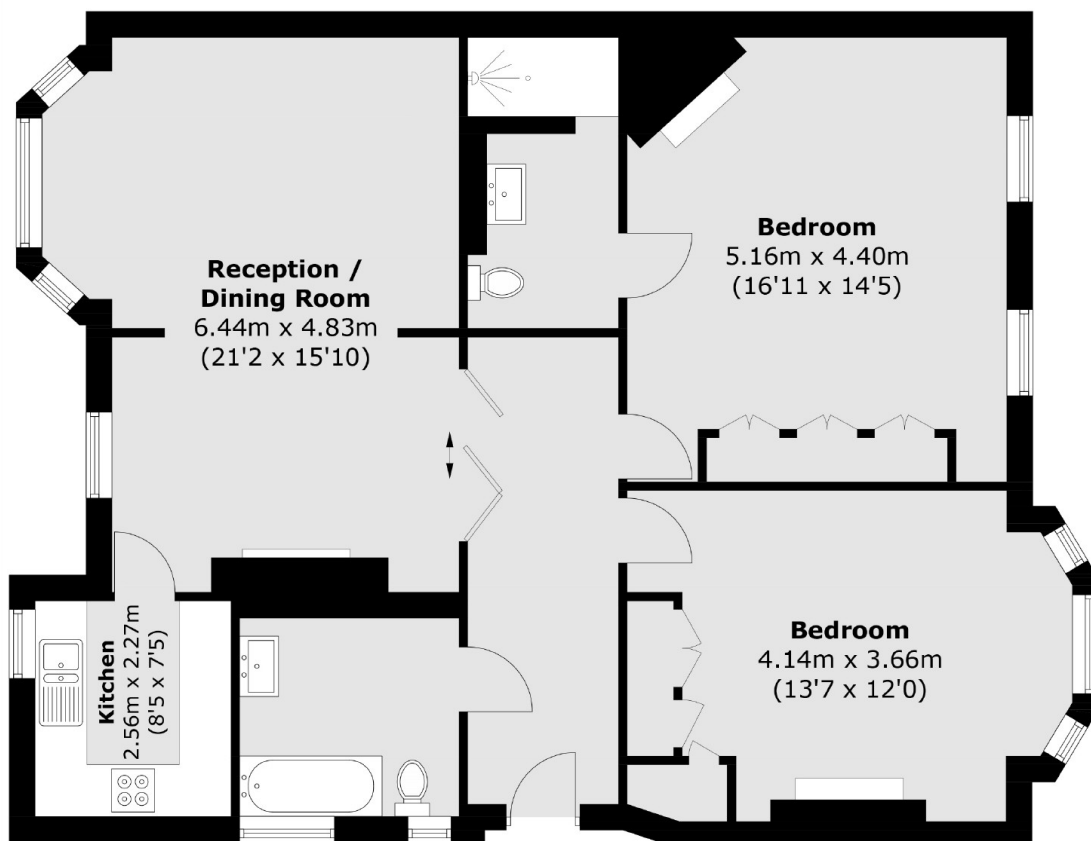
- Victorian Style Mansion Block
- Two Double Bedrooms
- Share of Freehold
- Two Bathrooms
- High Ceilings
- Caretaker



Greycoat Gardens, SW1P



Greycoat Gardens, London, SW1P



Total area (approx.): 99.6 sq. m (1,071.8 sq. ft)