

## Petty France, SW1H

### £400,000

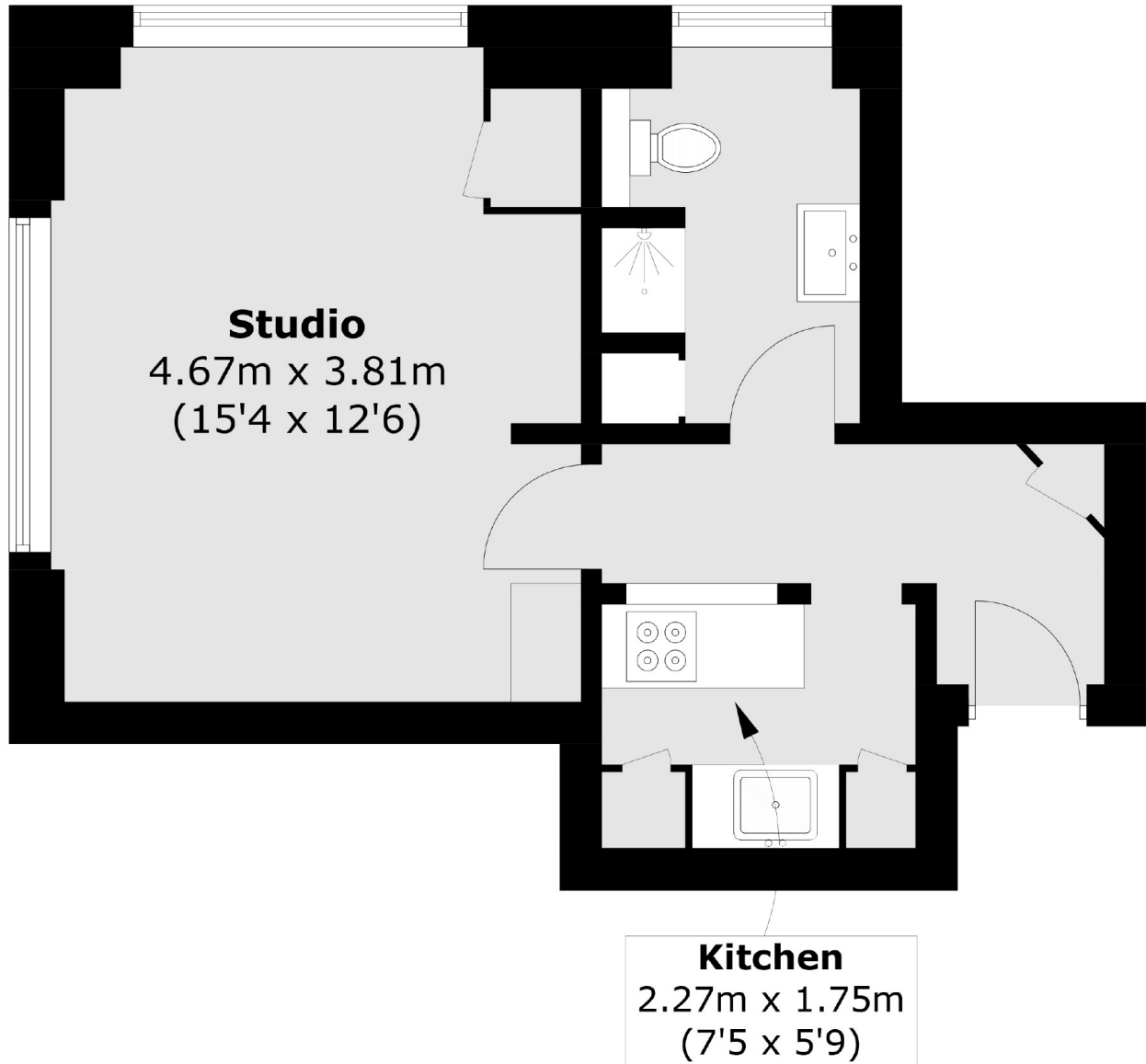
A well-presented bright studio apartment within a popular apartment building on Petty France. Situated in a portered block this apartment would make an ideal rental investment or pied-à-terre.

An excellent location with St James's Park tube station almost on the doorstep. Victoria train and bus terminals just a few minutes away and a variety of shops and restaurants nearby.

### Features

- No Onward Chain
- On-Site Porter
- Close to St James's Park
- Share Of Freehold
- Separate Kitchen
- Studio

# Petty France, London, SW1H



Total area (approx.): 32.4 sq. m (348.7 sq. ft)