



## Chapter Chambers, SW1P

£600,000

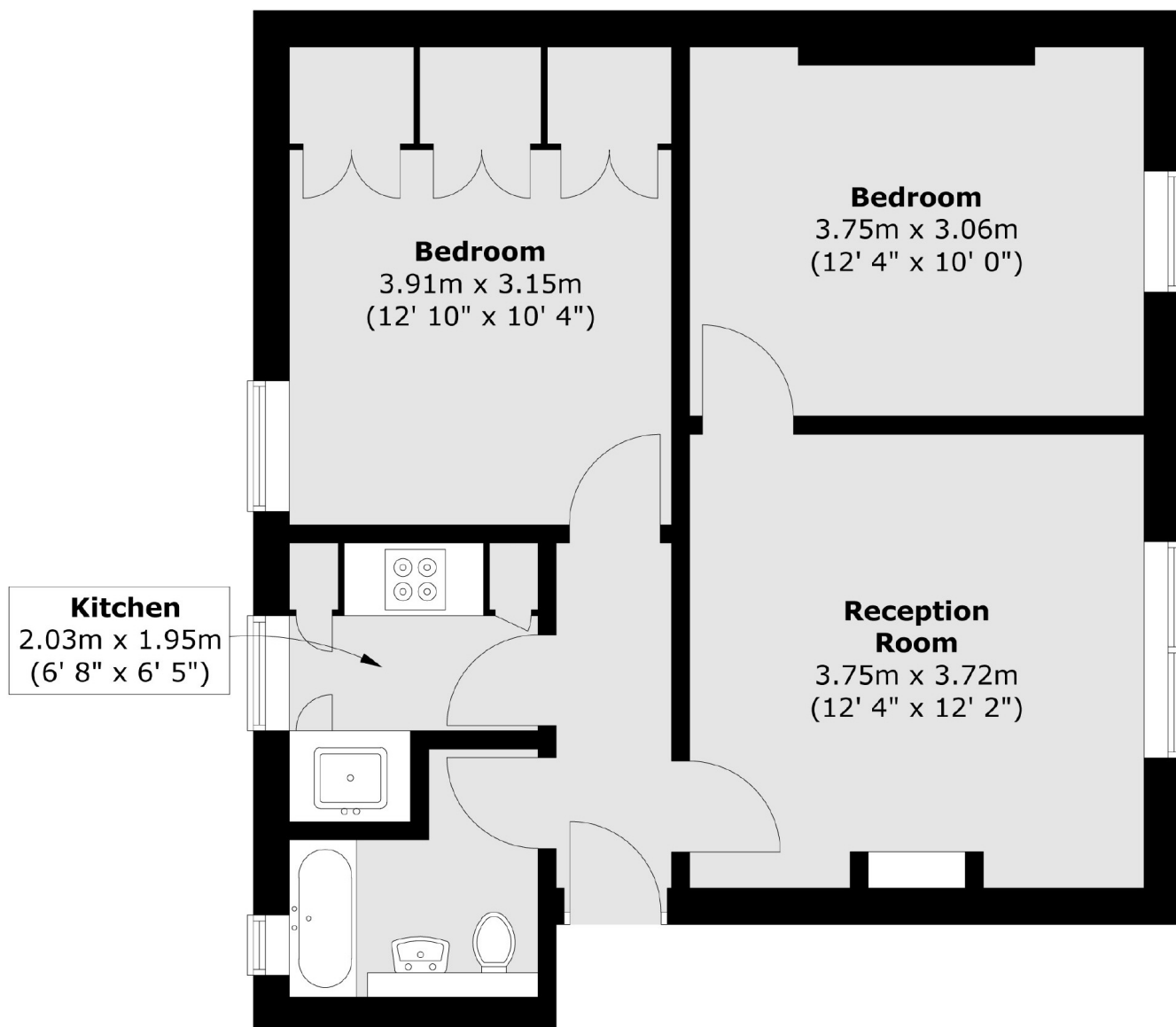
This charming two-bedroom flat is beautifully arranged within a sought-after mansion block, right in the heart of Westminster.

Chapter Street is just behind Vincent Square with easy access to the Tate Gallery and the Thames. Transport links are superb with Pimlico tube station only moments away and further options at Victoria and St. James's Park. Local amenities can be found in Pimlico with a wider selection of shops on Victoria street and Cardinal Place shopping centre.

### Features

Two Double Bedrooms  
Mansion Property  
Third Floor  
c. 168 Year Lease  
Close Proximity To Transport  
549 SQFT

# Chapter Chambers, London, SW1P



Total area (approx.) : 51 sq. m (549 sq. ft)