



## Marsham Street, SW1P

£1,750,000

A well-proportioned apartment in a sought-after block in the heart of Westminster. This apartment has been refurbished to an extremely high standard.

Westminster Gardens is ideally located for transport links from Westminster and St James's Park stations and the wide variety of shops, bars and restaurants that Westminster and Victoria have to offer.

### Features

- Fifth Floor
- Concierge
- Roof Garden
- Close Transport Links
- Two Bedrooms
- Smallbone Kitchen

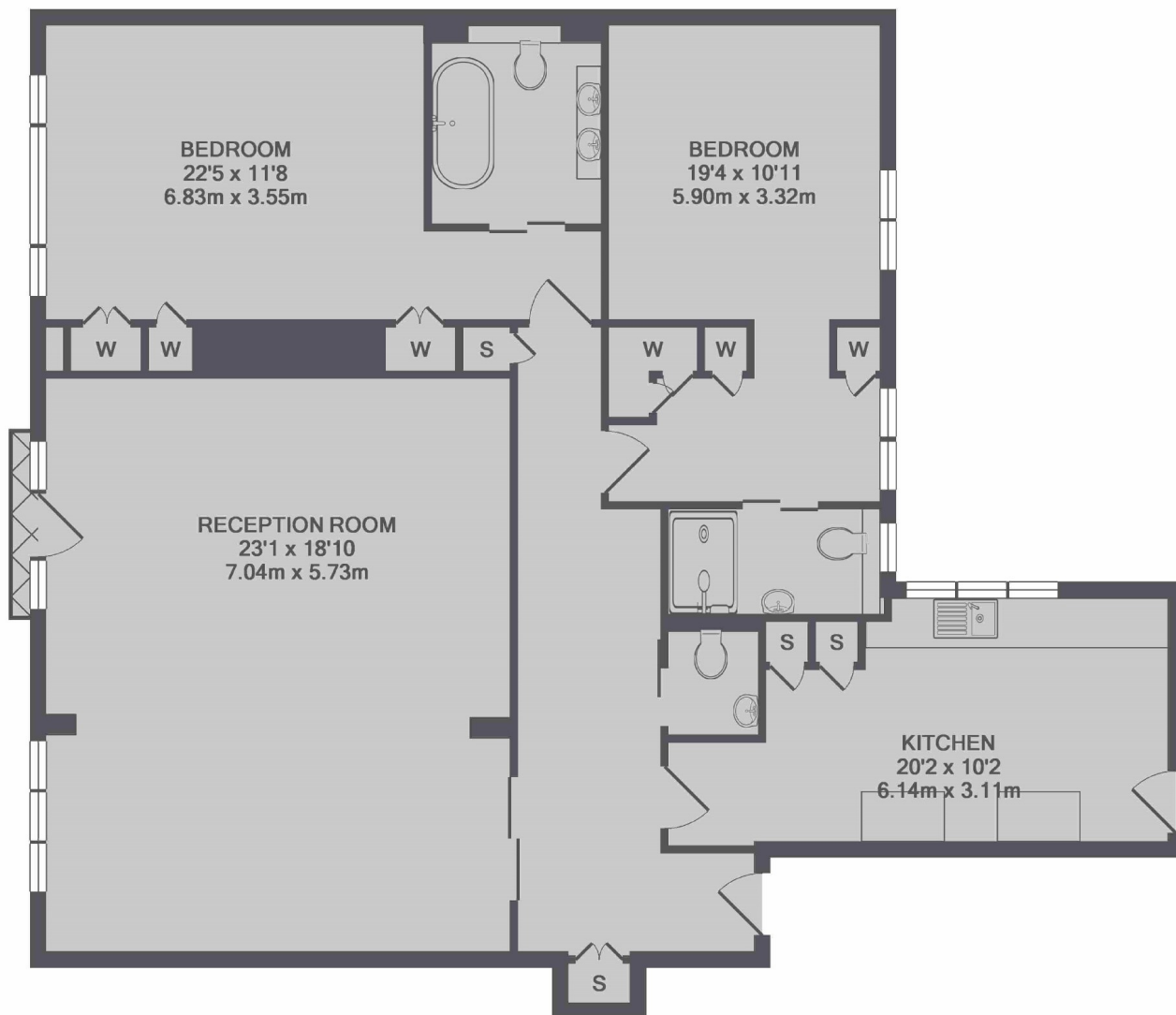


## Marsham Street, SW1P

Westminster Gardens is secure and popular 1930s residential apartment block which benefits from a private resident's roof garden and 24-hour concierge. The property is situated on the fifth floor with lift and has a large double reception room with a Juliet balcony and a separate stylish kitchen. There are two double bedroom suites with excellent storage and the master with an en-suite.



# Marsham Street, London, SW1P



TOTAL APPROX. FLOOR AREA 1361 SQ.FT. (126.5 SQ.M.)