



Charlwood Street, SW1V

£550,000

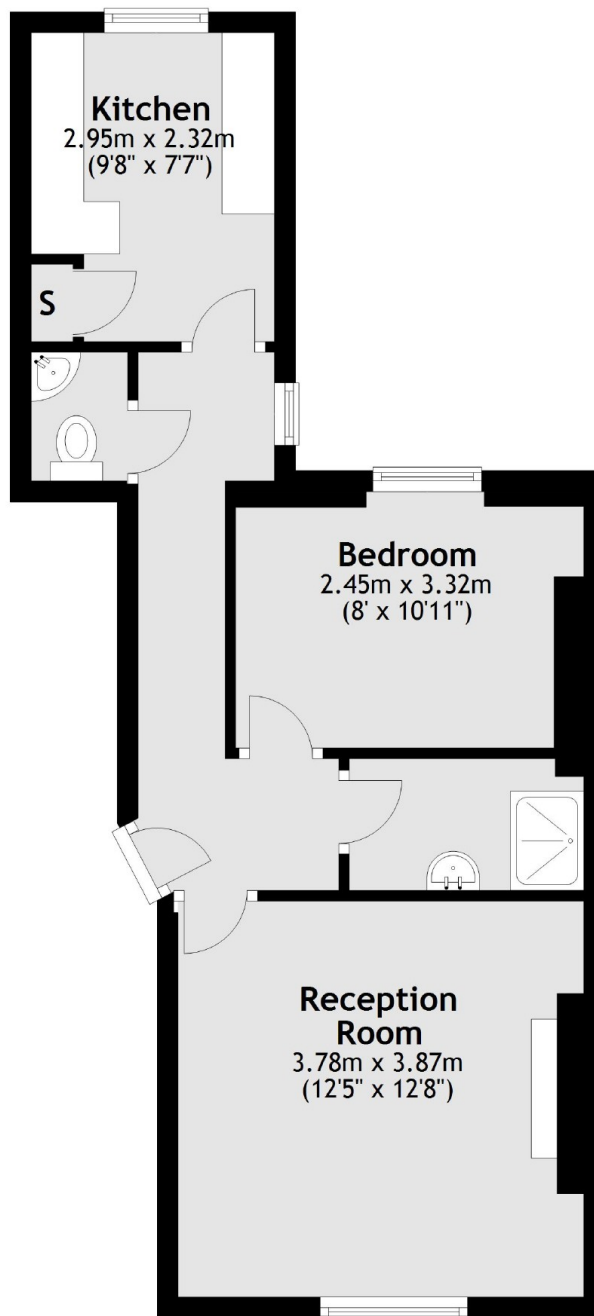
A bright and well proportioned one bedroom flat on the ground floor of a Georgian building in the heart of Pimlico. This flat would make a great home, pied a terre or rental investment.

Charlwood Street is ideally located for the shops, bars and cafés available in the area. Transport is nearby at either Pimlico or Victoria Stations.

Features

- One Bedroom
- Ground Floor
- High Ceilings
- Low Service Charge
- Close Transport Links
- Separate Kitchen

Charlwood Street, London, SW1V



Ground Floor

Total area: approx. 41.1 sq. metres (442.9 sq. feet)