



**Palace Place, SW1E**  
**£3,000,000**

**Dexters**



## Palace Place, SW1E

Experience the epitome of luxury living in this stunning three-bedroom penthouse nestled within the heart of Westminster. This exclusive residence boasts expansive, light-filled interiors with floor to ceiling windows that offer breathtaking views over St James's Park and Buckingham Palace.

The open-concept living and dining area is perfect for entertaining, complemented by a state of the art kitchen with top of the range appliances. Additional amenities include 24-hour concierge, secured underground parking and situated a moments walk from Cardinal Place and Victoria mainline station.

Palace place is located within short walking distance of Cardinal Place that offers an abundance of boutique shops and fine dining as well as being conveniently located within close proximity of Victoria station.

### Features

- Penthouse
- 3 Double Bedroom
- 3 Bathrooms (2 En-Suite)
- Dual Aspect Open Plan Living
- Floor To Ceiling Windows With Fantastic Views





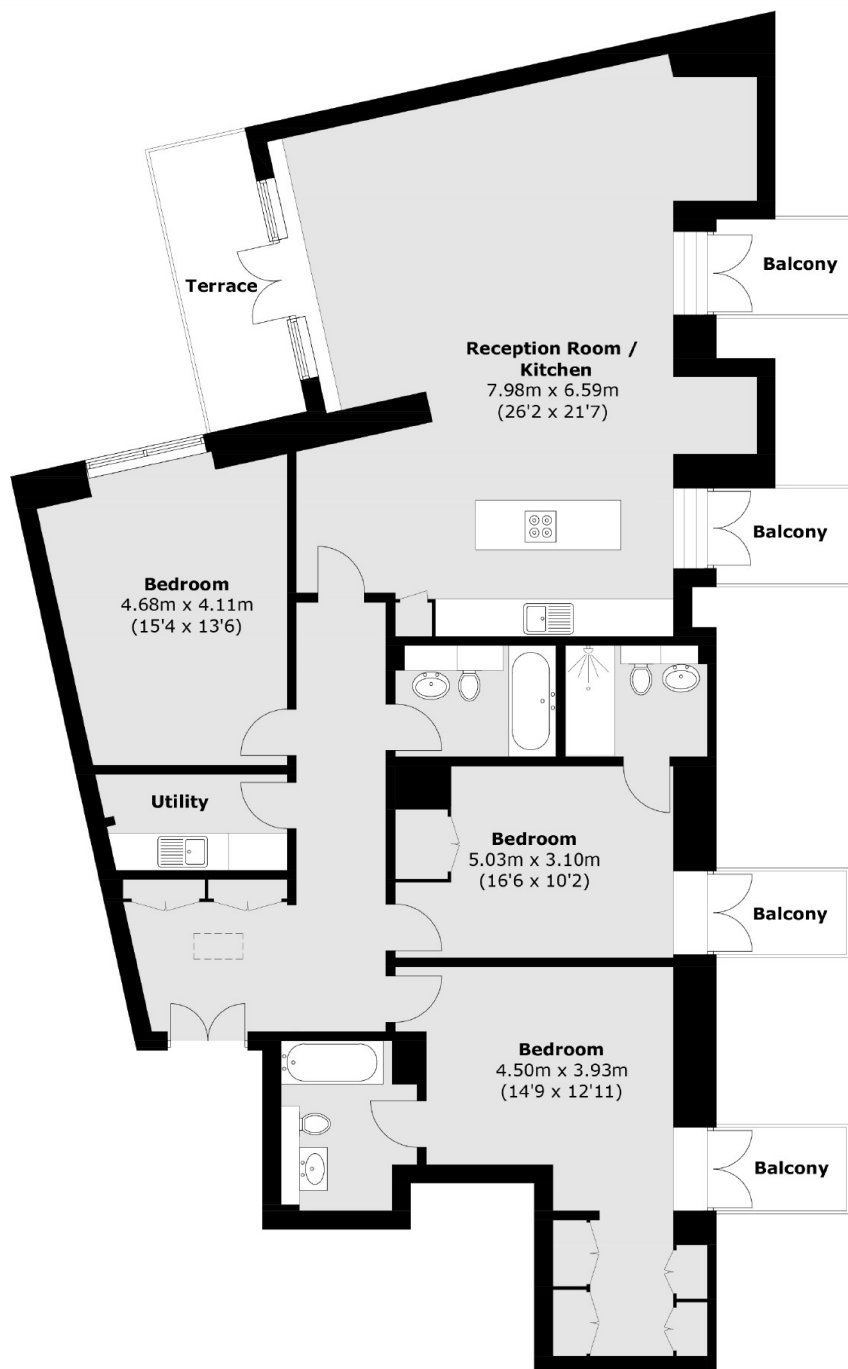








# Palace Place, London, SW1E



Total area (approx.): 154.3 sq. m (1,660.9 sq. ft)  
Balconies (approx.): 12.6 sq. m (135.6 sq. ft)  
Terrace (approx.): 7.4 sq. m (79.6 sq. ft)

## Dexters

Westminster  
50 Churton Street  
London  
SW1V 2LP  
Sales  
020 7590 9570

Energy Rating: E. We aim to make our particulars both accurate and reliable. However they are not guaranteed; nor do they form part of an offer or contract. If you require clarification on any points then please contact us, especially if you're traveling some distance to view. Please note that appliances and heating systems have not been tested and therefore no warranties can be given as to their good working order.

 **RICS** | Regulated  
Estate Agent  
and Letting Agent

[dexters.co.uk](https://www.dexters.co.uk)