



Palace Place, SW1E
£3,500,000

Dexters



Palace Place, SW1E

Experience the epitome of luxury living in this stunning three-bedroom penthouse nestled within the heart of Westminster. This exclusive residence boasts expansive, light-filled interiors with floor to ceiling windows that offer breathtaking views over St James's Park and Buckingham Palace.

The open-concept living and dining area is perfect for entertaining, complemented by a state of the art kitchen with top of the range appliances. Additional amenities include 24-hour concierge, secured underground parking and situated a moments walk from Cardinal Place and Victoria mainline station.

Palace place is located within short walking distance of Cardinal Place that offers an abundance of boutique shops and fine dining as well as being conveniently located within close proximity of Victoria station.

Features

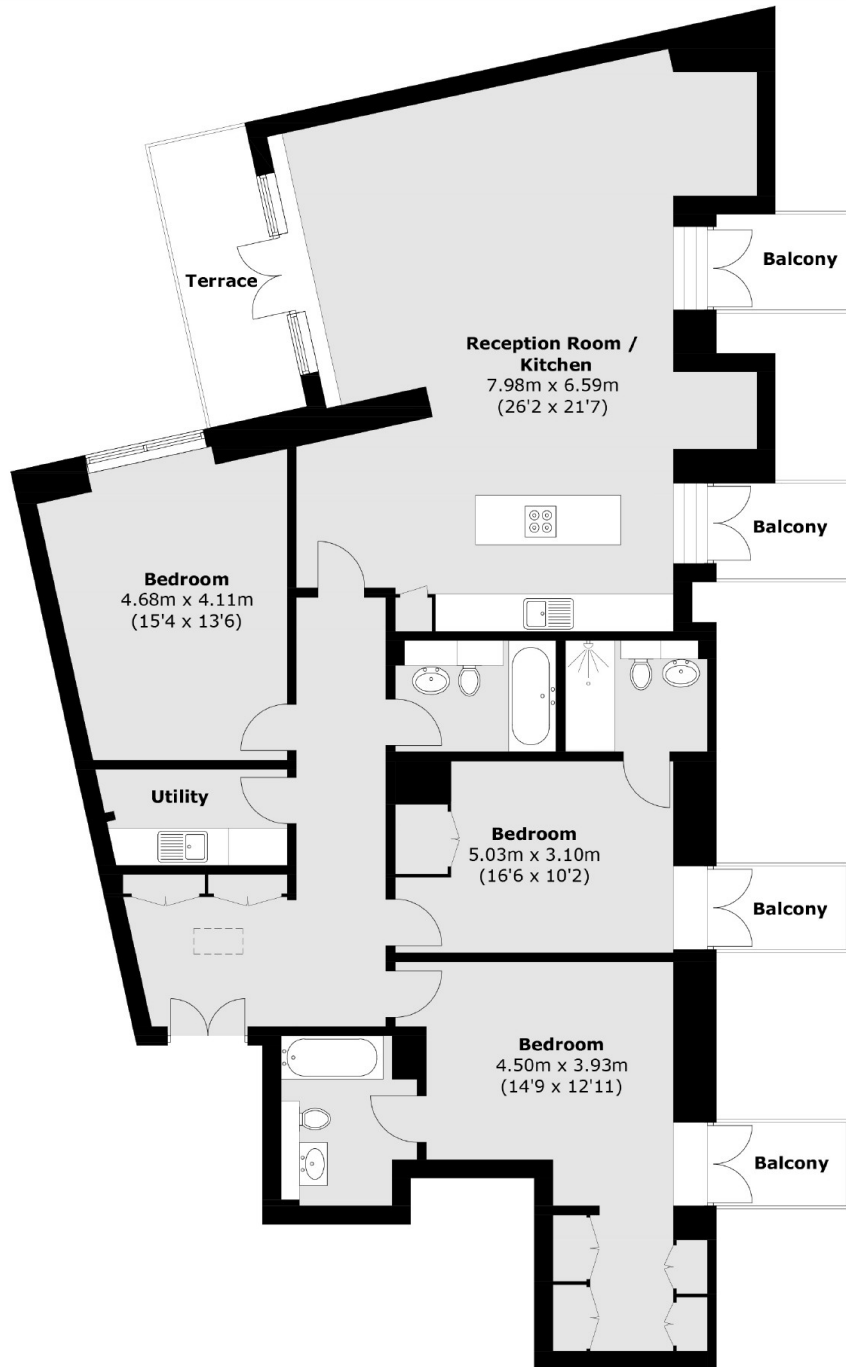
- Penthouse
- 3 Double Bedroom
- 3 Bathrooms (2 En-Suite)
- Dual Aspect Open Plan Living
- Floor To Ceiling Windows
- With Fantastic Views







Palace Place,
London, SW1E



Total area (approx.): 154.3 sq. m (1,660.9 sq. ft)
Balconies (approx.): 12.6 sq. m (135.6 sq. ft)
Terrace (approx.): 7.4 sq. m (79.6 sq. ft)