



## Warwick Square, SW1V

### £1,200,000

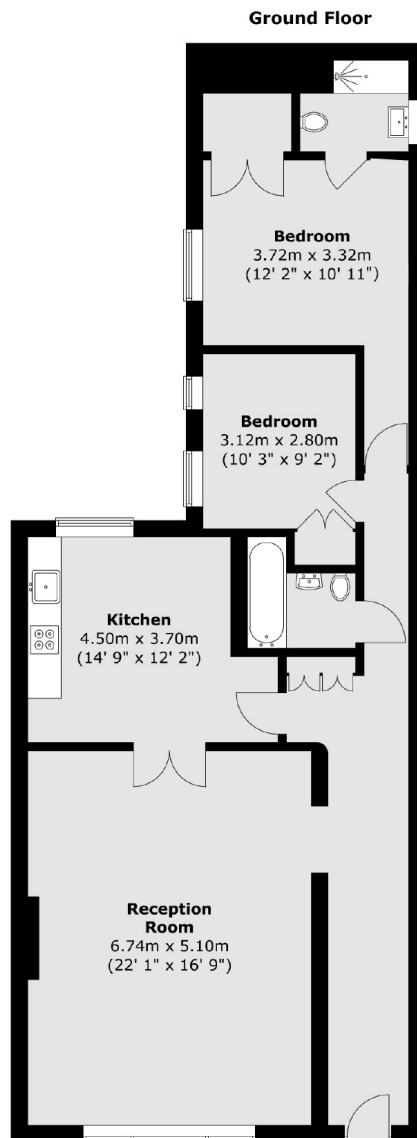
A large apartment on the ground floor of a Georgian conversion opposite an impressive garden square. The property has its own private entrance and high ceilings throughout.

Warwick Square sits in an exceptional position in the heart of SW1V and is only one of three squares in Pimlico. It is convenient for the neighbourhoods of Belgravia, Knightsbridge, Chelsea, as well as Victoria and the historical landmarks of Westminster and St. James's.

### Features

- Two Bedrooms
- Two Bathrooms
- High Ceilings
- Own Entrance
- Garden Square
- Excellent Location

# Warwick Square, London, SW1V



Total area (approx.) : 103.5 sq. m (1114 sq. ft)

## Dexters

Westminster  
50 Churton Street  
London  
SW1V 2LP  
Sales  
020 7590 9570

Energy Rating: D. We aim to make our particulars both accurate and reliable. However they are not guaranteed; nor do they form part of an offer or contract. If you require clarification on any points then please contact us, especially if you're traveling some distance to view. Please note that appliances and heating systems have not been tested and therefore no warranties can be given as to their good working order.

 **RICS** | Regulated  
Estate Agent  
and Letting Agent

[dexters.co.uk](https://www.dexters.co.uk)