



## Warwick Square, SW1V

£1,350,000

A large apartment on the ground floor of a Georgian conversion opposite an impressive garden square. The property has its own private entrance and high ceilings throughout.

Warwick Square sits in an exceptional position in the heart of SW1V and is only one of three squares in Pimlico. It is convenient for the neighbourhoods of Belgravia, Knightsbridge, Chelsea, as well as Victoria and the historical landmarks of Westminster and St. James's.

### Features

- Two Bedrooms
- Two Bathrooms
- High Ceilings
- Own Entrance
- Garden Square
- Excellent Location

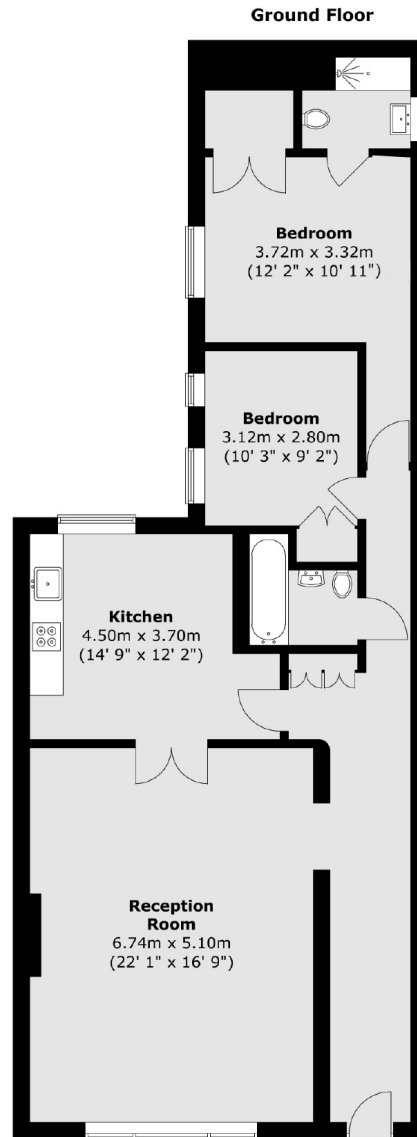


**Warwick Square, SW1V**





# Warwick Square, London, SW1V



Total area (approx.) : 103.5 sq. m (1114 sq. ft)