



Churchill Gardens, SW1V

£475,000

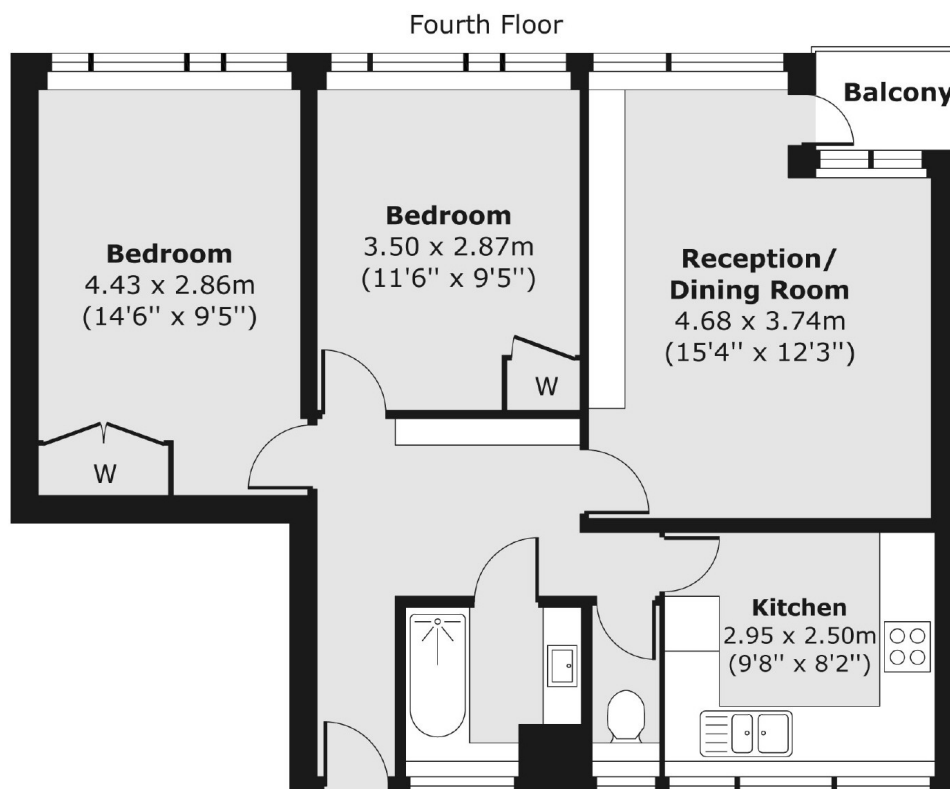
A pretty and well-presented apartment with two good size bedrooms, bathroom with a separate WC, kitchen, reception room and a balcony.

Anson House is ideally located close to the River Thames and is within walking distance of the amenities of Pimlico and Chelsea. Transport links are close by at either Pimlico or Victoria.

Features

- Long Lease
- Fourth Floor
- Communal Heating/Hot Water
- Balcony
- Lift
- River Thames Nearby

Churchill Gardens, London, SW1V



Total area (approx.) 61.33 sq. m (660 sq. ft)
Balcony area (approx.) 1.69 sq. m (18 sq. ft)