



St. Georges Square, SW1V

£595,000

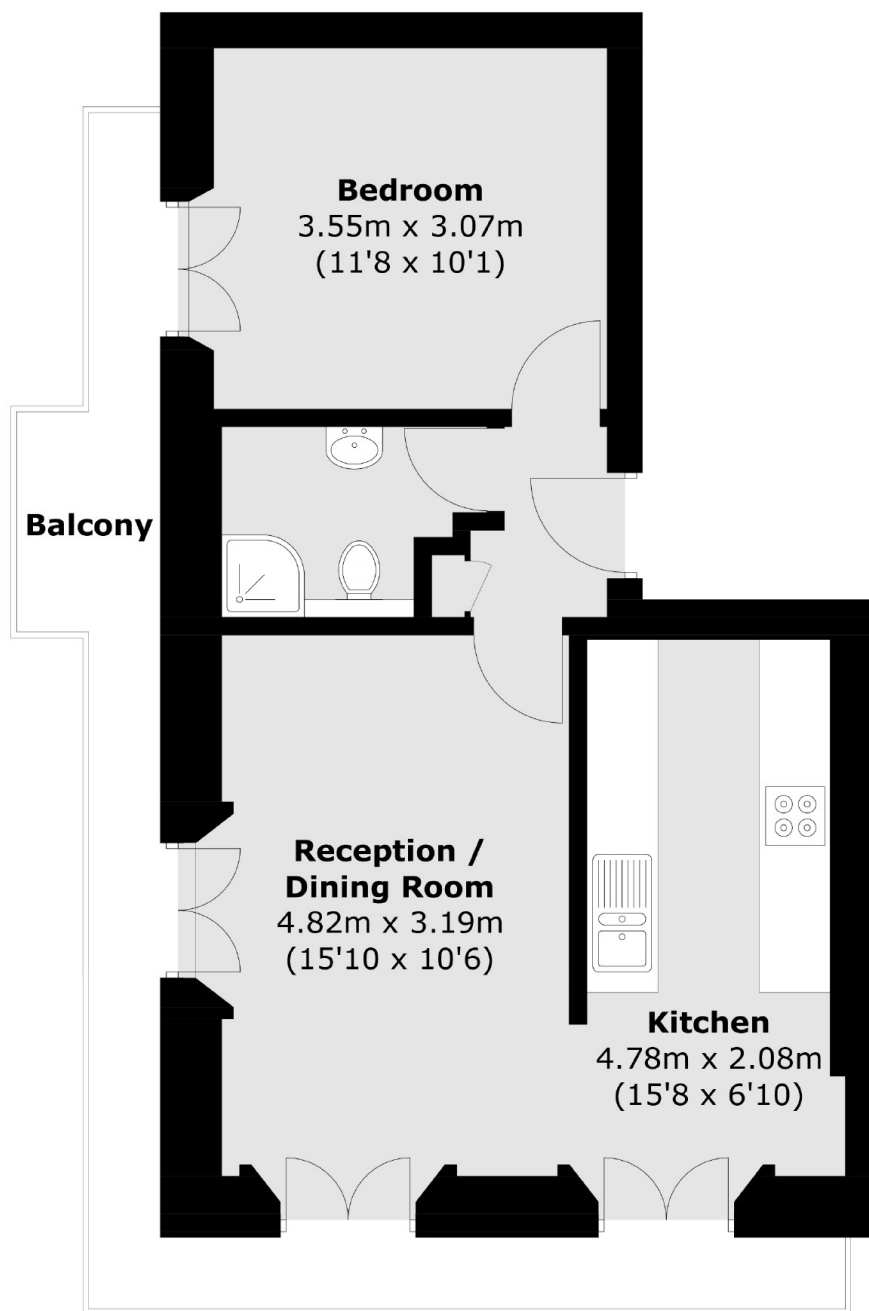
Positioned on the first floor of an attractive stucco fronted building, this fantastic one - bedroom apartment offers ample natural light with floor to ceiling windows and an elegant wrap round balcony.

St George's Square is a beautiful garden square within a few minutes of Pimlico tube station and The River Thames, as well as within easy reach of all the local amenities of Victoria and the surrounding area.

Features

- Excellent Location
- Open-plan Kitchen
- Period Features
- First Floor
- No Chain
- Balcony

St. Georges Square, London, SW1V



Total area (approx.): 42.2 sq. m (454.2 sq. ft)
Balcony area (approx.): 10.9 sq. m (117.3 sq. ft)