



## Willow Place, SW1P

£515,000

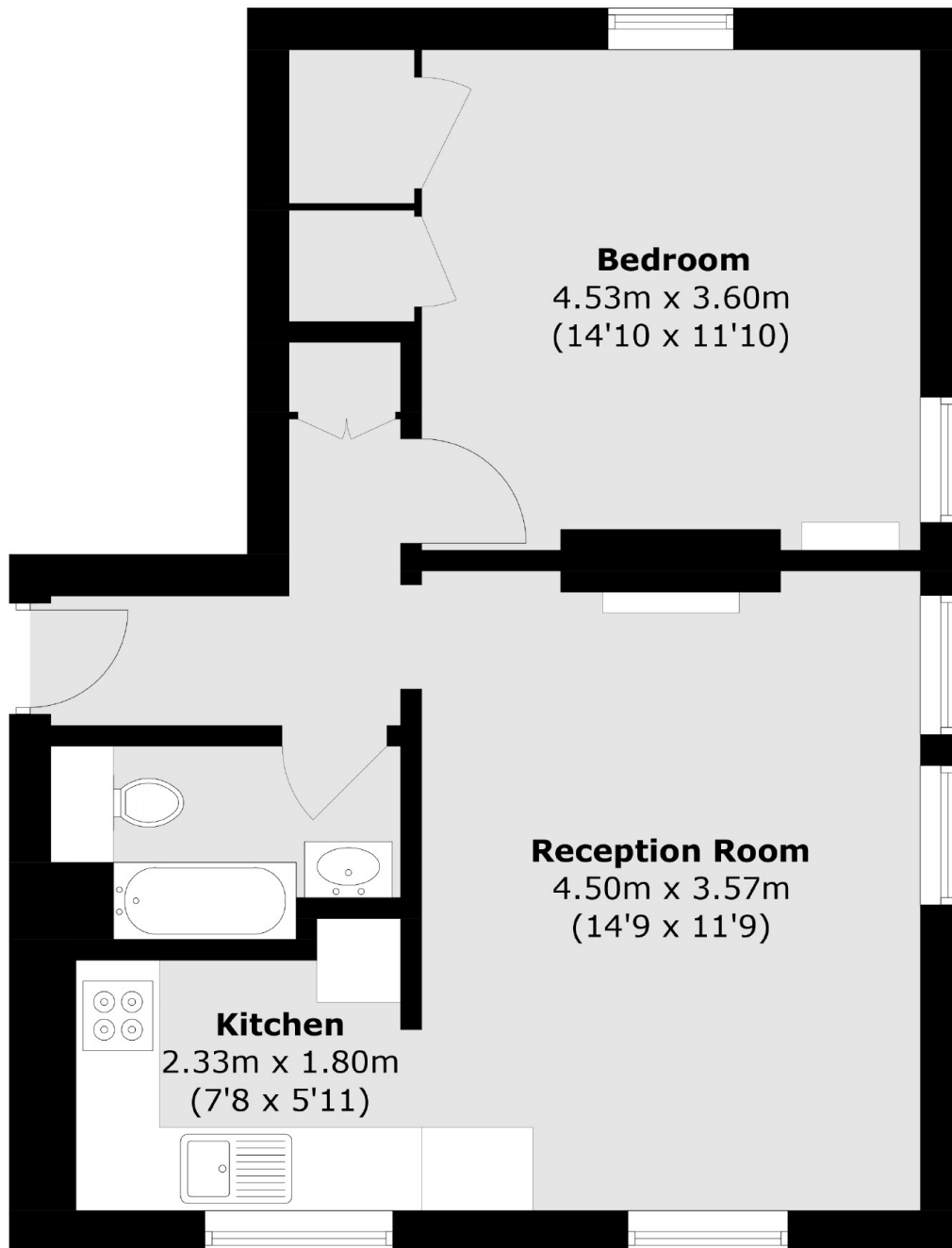
This is a well-maintained one double bedroom apartment on the fourth floor of a wonderful period building. The apartment is beautifully finished to a high standard and comes with a separate kitchen and reception room, a double bedroom, modern bathroom and plenty of natural light throughout. This flat would make an ideal pied a terre, rental investment or first time purchase.

National Rail services (including Gatwick Express) and underground services (Victoria, District and Circle lines) from nearby Victoria station.

### Features

- One Double bedroom
- Separate Kitchen
- Fourth Floor
- Lift
- Mansion Block
- No Chain

# Willow Place, London, SW1P



Total area (approx.): 45.0 sq. m (484.4 sq. ft)