



Hugh Street, SW1V

£2,300,000

A beautiful five bedroom freehold house with a large south facing garden, with Victoria & Belgravia being very close by. The property is in excellent condition throughout with an abundance of entertaining space.

Hugh Street is moments from Belgravia as well as the shops and restaurants Elizabeth Street have to offer. Pimlico and Victoria transport links are also a short walk away.

Features

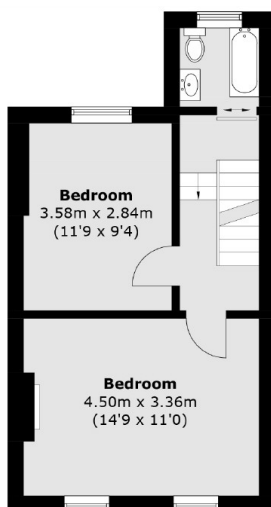
- Freehold House
- South Facing Garden
- Period Property
- Excellent Condition
- Popular Location
- Five Bedrooms



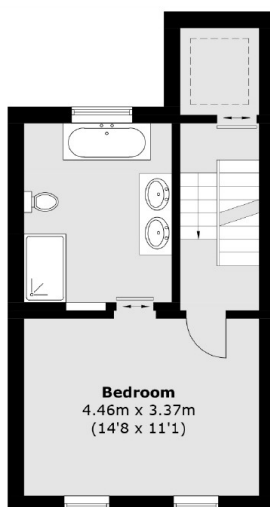
Hugh Street, SW1V



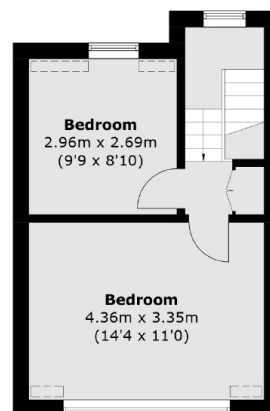
Hugh Street, London, SW1V



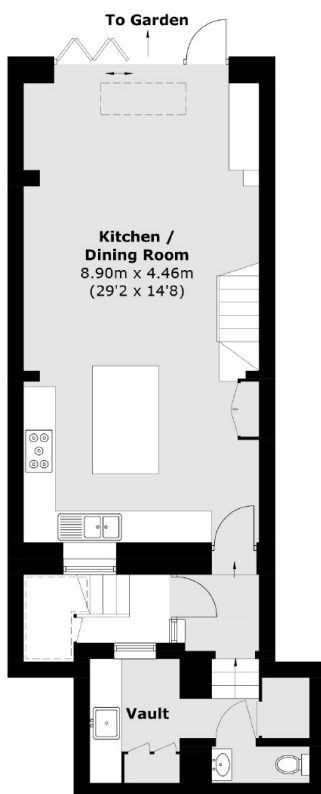
First Floor



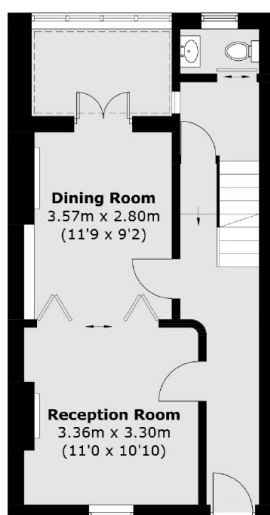
Second Floor



Third Floor



Lower Ground Floor



Raised Ground Floor

Total area (approx.): 190.2 sq. m (2,024.1 sq. ft)