



St. Georges Drive, SW1V

£1,175,000

A spacious three-bedroom garden flat located in a stucco-fronted building on the Pimlico grid. This property benefits from its own private entrance with ample storage and utilised vaults.

St George's Drive is located in the heart of Pimlico. Transport facilities are excellent, situated midway between Pimlico tube and Victoria tube and mainline stations with the Gatwick Express service and trains to the south east.

Features

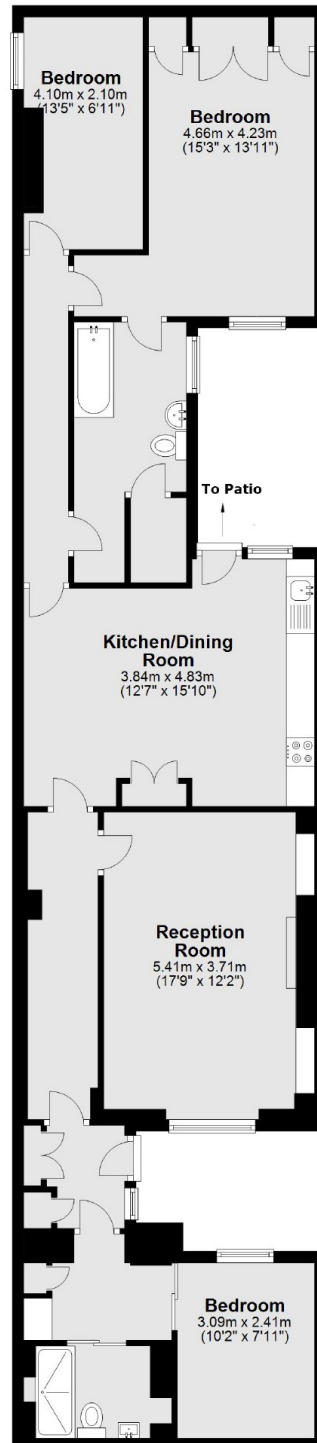
- Close To Transport Links
- Three Double Bedrooms
- Share Of Freehold
- Private Entrance
- Patio Garden
- Pimlico Grid



St. Georges Drive, SW1V



St. Georges Drive, London, SW1V



Total area: approx. 109.1 sq. metres (1174.4 sq. feet)