



## Montaigne Close, SW1P

£875,000

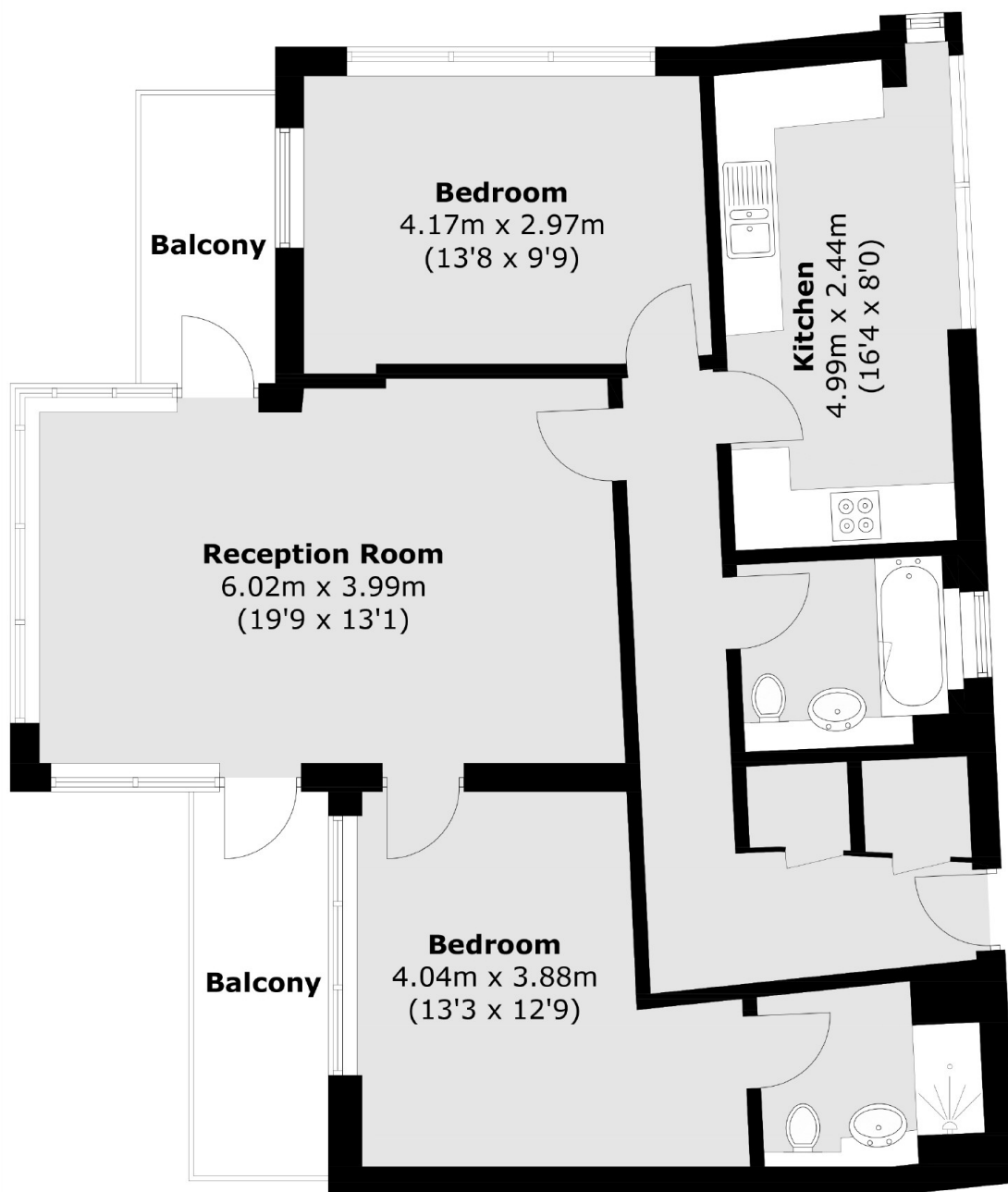
This luxurious two double bedroom apartment is located within one of Westminster's most desirable developments, offering ample living space, two private balconies, modern kitchen/dining area and two separate bathrooms (en suite).

Located nearby are a variety of shops and restaurants in Pimlico and Victoria Street, transport is excellent with easy access to Pimlico, Westminster, St James tube and Victoria Station.

### Features

- Two Double Bedrooms
- Two Separate Balconies
- High Quality Finish Throughout
- Underground Parking
- Residents Gym
- 24 Hour Concierge

# Montaigne Close, London, SW1P



Total area (approx.): 86.2 sq. m (927.8 sq. ft)  
Balcony (approx.): 9.8 sq. m (105.5 sq. ft)

## Dexters

Westminster  
50 Churton Street  
London  
SW1V 2LP  
Sales  
020 7590 9570

Energy Rating: D. We aim to make our particulars both accurate and reliable. However they are not guaranteed; nor do they form part of an offer or contract. If you require clarification on any points then please contact us, especially if you're traveling some distance to view. Please note that appliances and heating systems have not been tested and therefore no warranties can be given as to their good working order.

 **RICS** Regulated  
Estate Agent  
and Letting Agent

dexters.co.uk