



John Islip Street, SW1P

£1,650,000

Abell House is one of Westminster's prestigious apartment buildings with an outstanding health suite with an excellent swimming pool, gym and spa. There is also 24-hour concierge service, communal gardens and a business suite.

John Islip Street is ideally located for a variety transport links with Westminster and St James's Park underground station, Victoria station mainline and underground, plus Gatwick Express nearby.

Features

- Swimming Pool
- Spa
- 24 Hours Concierge
- Communal Gardens
- Business Suite
- Two Bedrooms



John Islip Street, SW1P

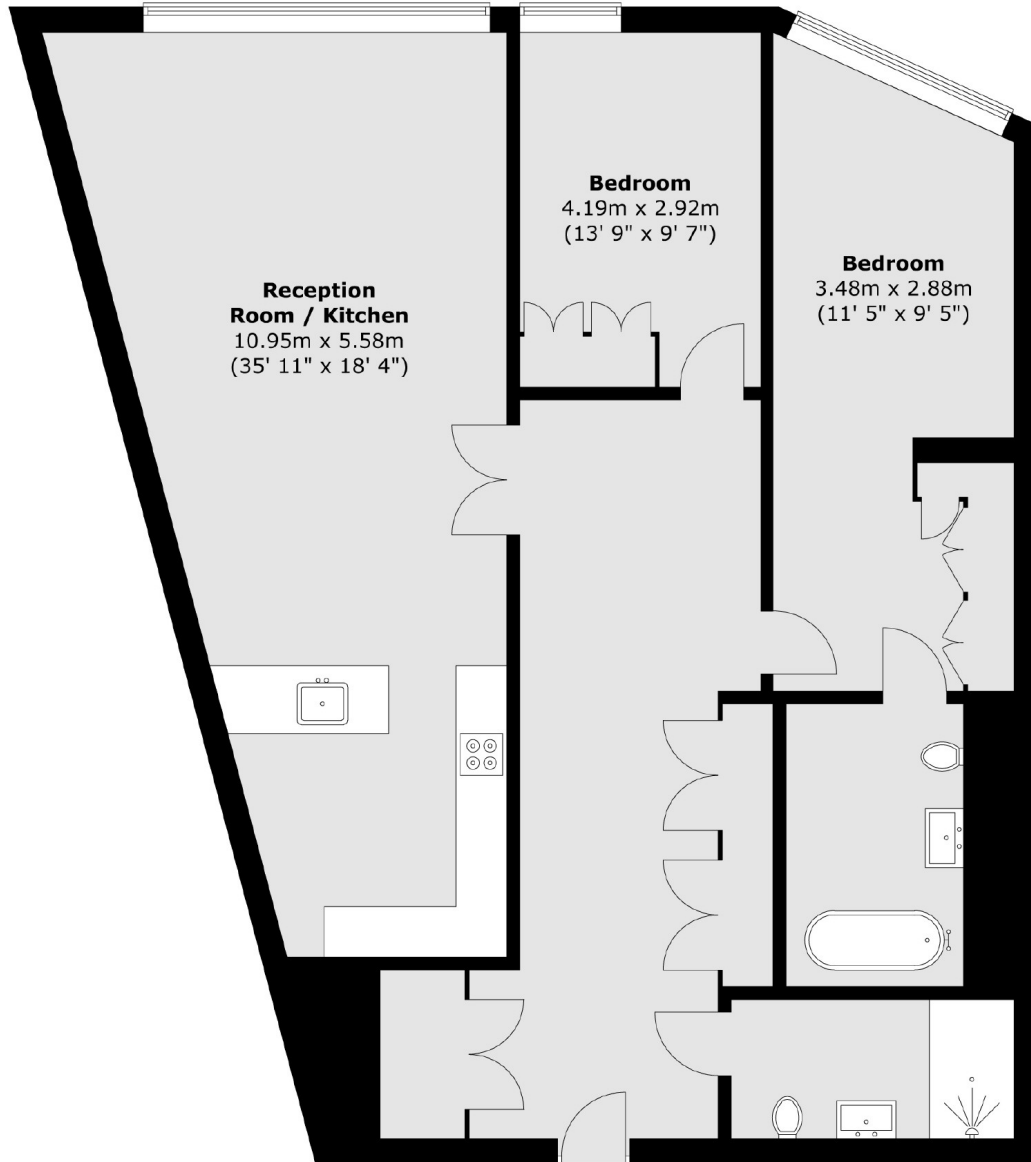
This contemporary apartment is finished to a high specification and has the added benefit of climate cooling throughout. The kitchen is presented in a sleek modern style and is open plan to a spacious reception room.

Positioned on the raised ground floor there are two good size bedrooms with roomy fitted wardrobes, an ensuite bathroom and a family bathroom, a large utility cupboard and storage cupboard are in the hallway.

This apartment would make a very comfortable London home or an excellent pied-à-terre and is located close to The Houses of Parliament and many of Westminster's finest historical buildings.



John Islip Street, London, SW1P



Total area (approx.) : 126.4 sq. m (1360 sq. ft)