



## Lewisham Street, SW1H

£2,400,000

A rare opportunity to purchase a mews-style freehold house with outside space near St James's Park. Located within the Birdcage Walk Conservation Area.

Positioned in one of London's historic locations and with a variety of excellent transport links within easy reach of the property, Westminster and St James's Park underground station, Victoria station mainline and underground, plus Gatwick Express

### Features

- Freehold
- Conservation Area
- Roof Terrace
- Rare to Market
- Two Bedrooms
- Two Reception Rooms



## Lewisham Street, SW1H

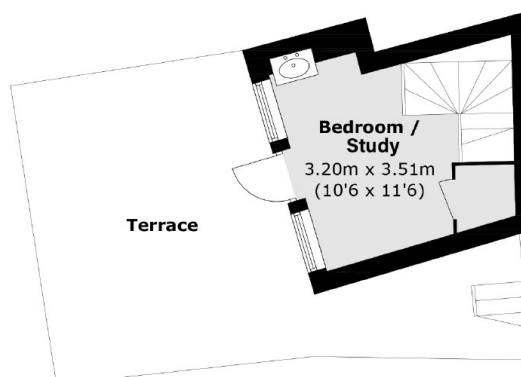
This unique property is laid out over five floors, on the lower ground floor is a spacious kitchen/dining room, with a splendid range of fitted units, a double oven, an American style fridge/freezer, a large storage cupboard and a utility room.

On the upper ground floor is a reception room that could also be used as a third bedroom, bathroom and a storage cupboard. The first floor has a spacious drawing room. The principal bedroom suite is positioned on the second floor, with a large bathroom, wardrobes and a separate shower room. The third floor has a bedroom/study, a cupboard housing the boiler and there is a wonderful large terrace.

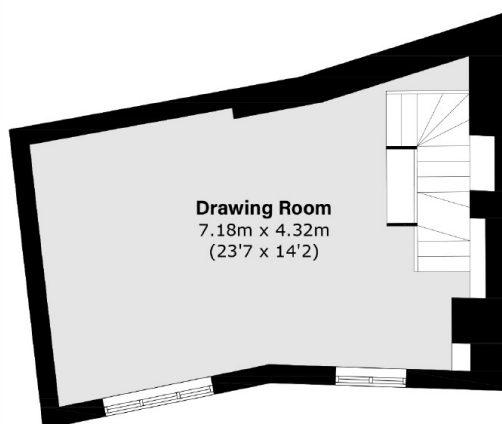
Lewisham Street is a pedestrian only street which runs parallel to Old Queen Street a few moments from St James's Park and the Houses of Parliament.



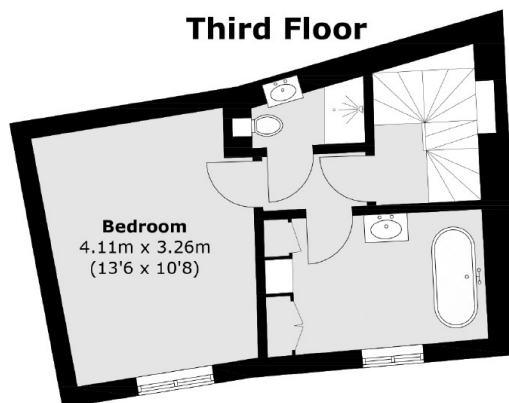
# Lewisham Street, London, SW1H



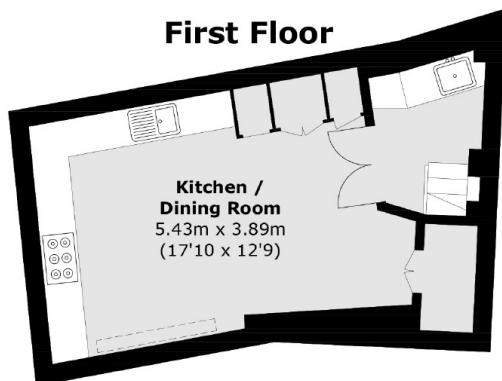
**Third Floor**



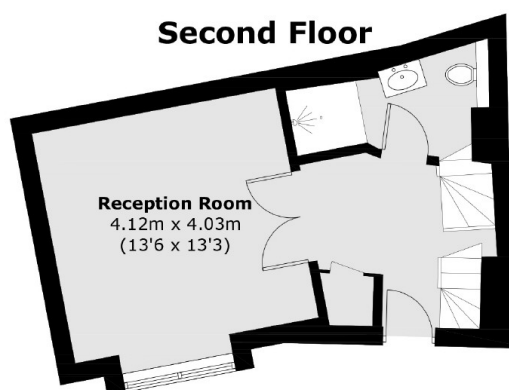
**First Floor**



**Second Floor**



**Lower Ground Floor**



**Upper Ground Floor**

Total area (approx.): 131.4 sq. m (1,414.3 sq. ft)  
Terrace (approx.): 26.0 sq. m (279.9 sq. ft)