



## Horseferry Road, SW1P

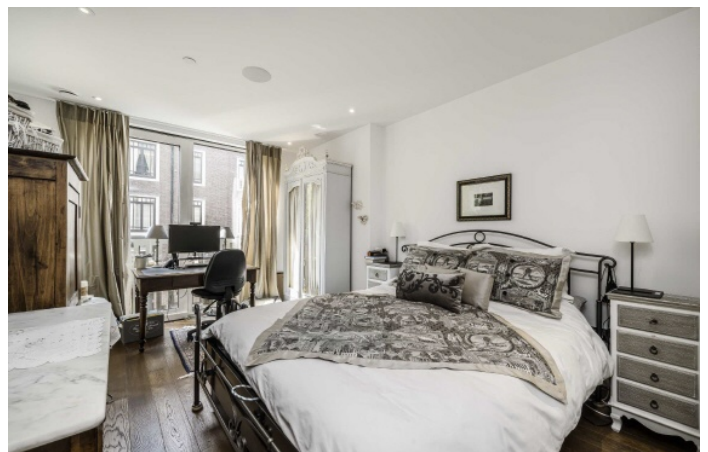
### £2,200,000

This exquisite 3-bedroom apartment is situated on the 4th floor (with lift) of this popular development, located in the heart of Westminster spanning approx 1220sq.ft (113.4 sq.m).

The Courthouse lies on the corner of Marsham Street and Romney Street and is only a short distance to St. James's Park, Buckingham Palace, Parliament Square and the River Thames. There are superb transport links at St. James's Park (Circle and District Lines), Victoria Station (Gatwick Express, British Rail Mainline, Circle, District and Victoria lines) with a further tube station at Westminster (Jubilee Line).

### Features

- Three Double Bedrooms
- Meticulously Designed
- Two Balconies
- Off-Street Parking
- 24hr Concierge
- Fully Equipped Gym



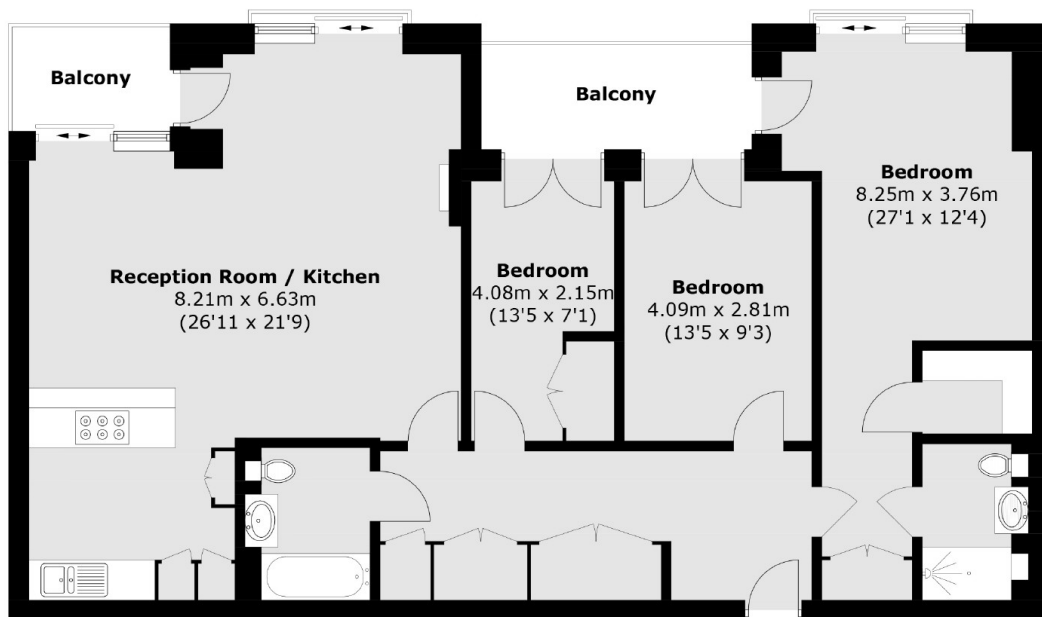
## Horseferry Road, SW1P

This apartment further comprises; an open plan reception room and kitchen with integrated breakfast bar, Miele integrated appliances including a wine cooler, there is excellent storage throughout including fitted wardrobes to all bedrooms, and there are 2 luxury bathrooms (1 en-suite), 2 balconies with views of the historic St Johns Gardens, wood flooring, comfort cooling and secure underground parking. Residents have the use of a 24-hour concierge service and a fully equipped gym.





# Horseferry Road, London, SW1P



Total area (approx.): 113.4 sq. m (1,220.6 sq. ft)  
Balcony (approx.): 10.1 sq. m (108.7 sq. ft)