



## Victoria Street, SW1H

£725,000

A well-presented and bright one bedroom apartment is located on the third floor of one of Westminster's most sought after Victorian mansion blocks. The apartment is in good condition and has excellent views across the open spaces of Christchurch Gardens.

Victoria Street provides many local amenities and is close to the green open spaces of St. James's Park. St James's Park underground station is the closest tube station.

### Features

- One Double Bedroom
- Gated Courtyard
- 24 Hour Concierge
- Lift
- Share of Freehold
- Close to Underground Stations



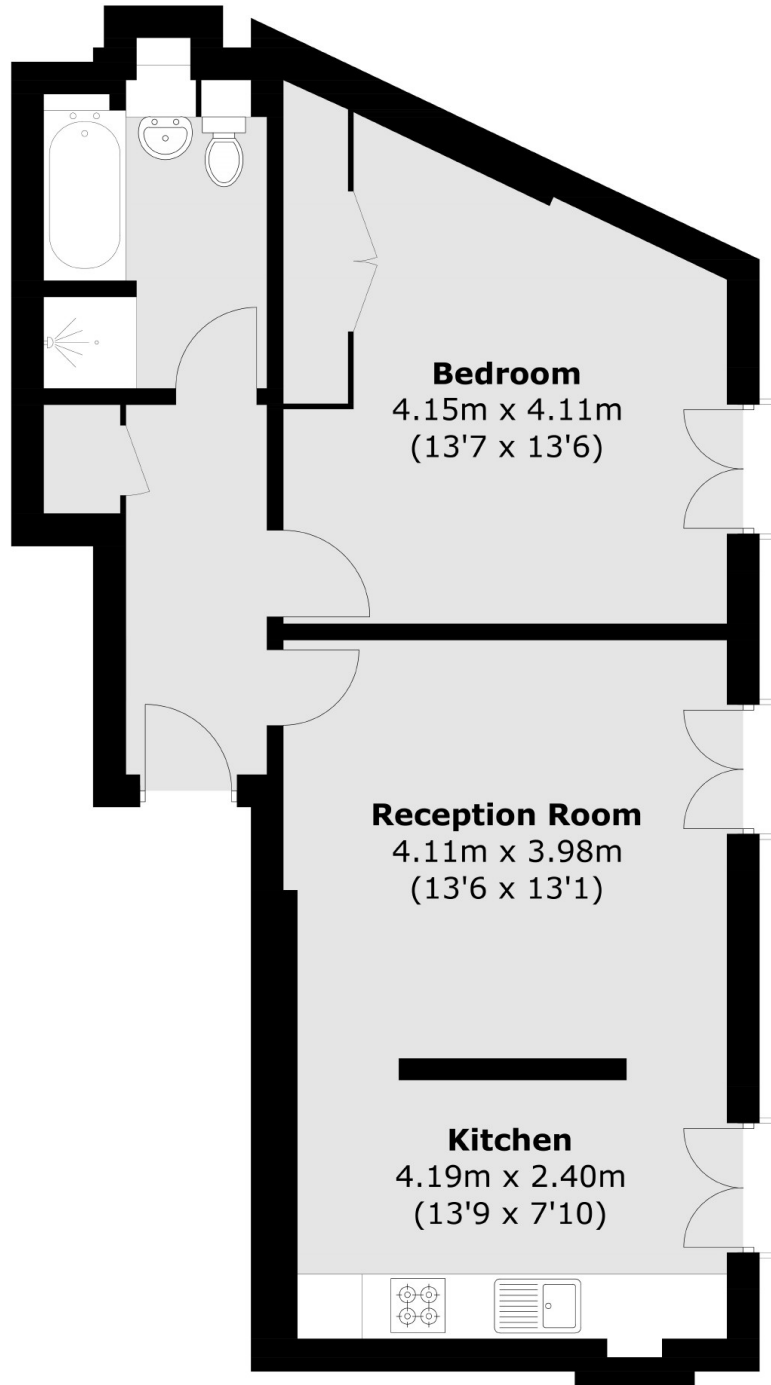


**Victoria Street, SW1H**





**Victoria Street,  
London, SW1H**



Total area (approx.): 56.9 sq. m (612.5 sq. ft)