



Carlisle Place, SW1P

£2,395,000

Immaculately presented this is a magnificent four bedroom mansion apartment located within the Westminster Cathedral Conservation area. This unique property has access to an expansive terrace.

Carlisle Place is positioned minutes from Victoria Street where there are a host of shops and fashionable restaurants. Transport links are excellent, with Victoria underground and mainline station offering a direct link to Gatwick Airport.

Features

- Four Double Bedrooms
- Porter
- Period Mansion Block
- Bespoke Wood Floors
- Terrace
- Direct Lift Access



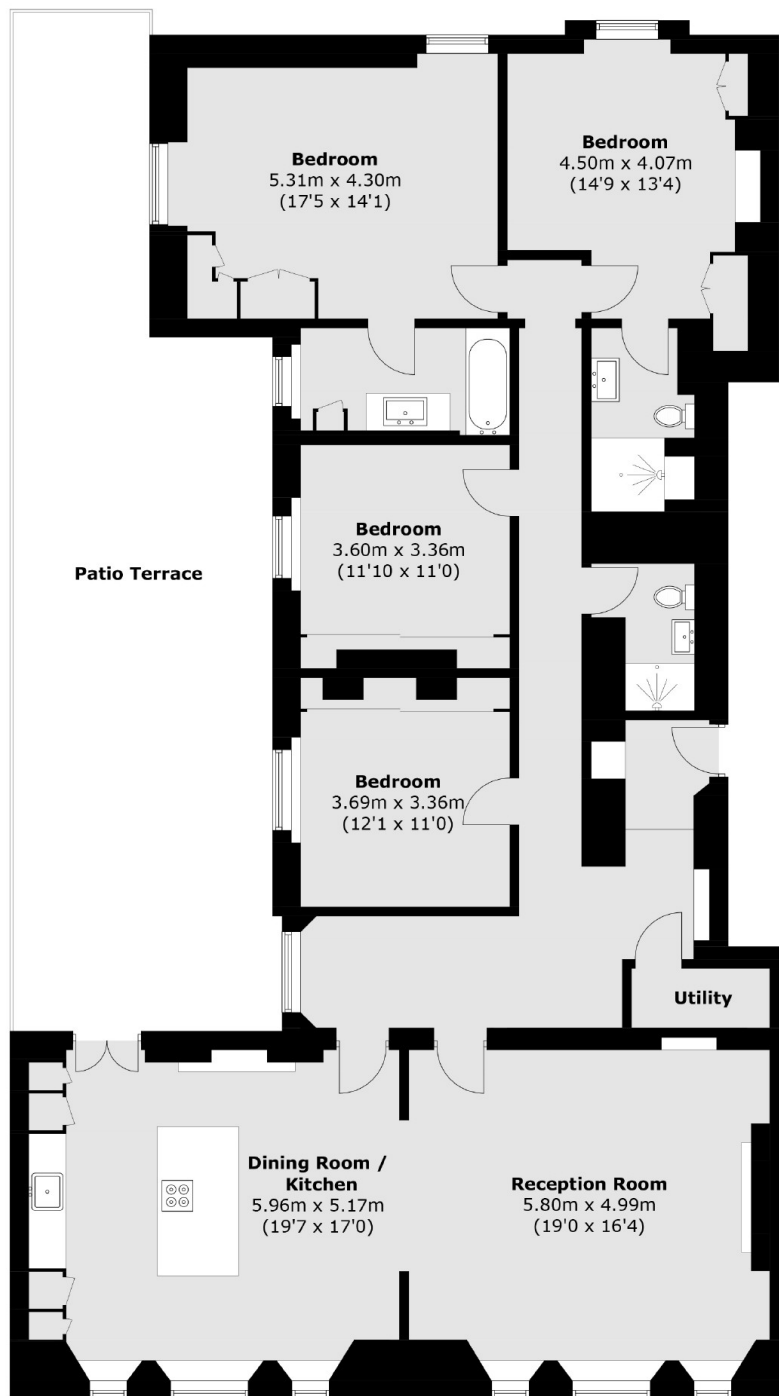
Carlisle Place, SW1P

The current owners have spared no expense on the refurbishment of this fine property and have restored many of the wonderful period features. Positioned on the lower ground floor there are two imposing rooms at the front of the property, a spacious reception room interconnecting with a beautifully designed kitchen /dining room with a stunning range of SieMatic units. Casement doors lead out to an amazing terrace (not demised).

There are four double bedrooms with fitted wardrobes. The principal bedroom has an ensuite bathroom designed by Phillip Starck, there are two further bathrooms (one ensuite) with Duravit fittings, there is also a utility room. Bespoke wood floors by Ted Todd are laid in all main rooms and the hallway.



Carlisle Place, London, SW1P



Total area (approx.): 176.8 sq. m (1903.0 sq. ft)
Patio Terrace : 58.3 sq. m (627.5 sq. ft)