



Buckingham Place, SW1E

£4,000,000

An immaculate property that offers superb accommodation across five floors in the heart of Westminster. This wonderful property will suit individuals or families looking for a central London home.

Buckingham Place is a quiet and renowned address located between Palace Street and Buckingham Gate within the Birdcage Walk Conservation area, and benefiting from a prestigious history with its close proximity to Buckingham Palace and St James's Park. Transport connections locally include Victoria Station with mainline services, including the Gatwick Express; Underground services from Victoria (accessed at Cardinal Place) and nearby St James

Features

- Four Bedrooms
- Media Room
- Patio
- Ventilation System
- Freehold
- Near St James's Park



Buckingham Place, SW1E

The current owners have been meticulous with the design and specification of this striking townhouse house which has been finished to a high standard and has the added benefit of a Rega Vent heat recovery ventilation system that runs throughout the property.

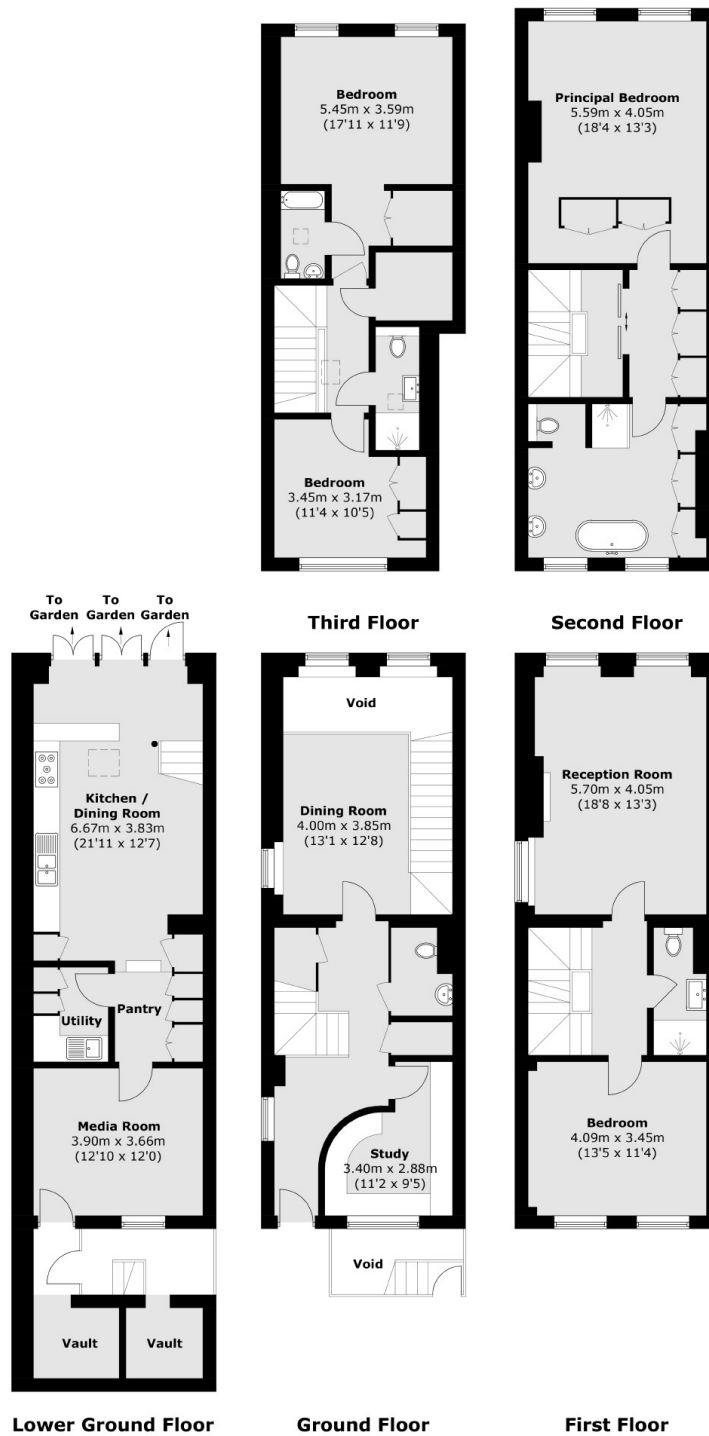
Situated on the lower ground floor is a spacious kitchen with ample space for dining, bi-folding doors lead to a pretty patio area. There is a utility room, pantry, media room and two useful vaults.

The Ground floor has a dining room with two large casement windows, a guest cloakroom and a study with a very interesting curved wall. On the first floor there is an elegant reception room with three large windows, a bedroom and bathroom.

Positioned on the second floor is the principal bedroom suite with a large bathroom and range of fitted wardrobes. The third floor has two bedrooms, two bathrooms and two large cupboards.



Buckingham Place, London, SW1E



Total area (approx.) : 236.2 sq. m (2,542.3 sq. ft)
Vaults : 6.2 sq. m (66.7 sq. ft)