



Tufton Street, SW1P

£1,250,000

Positioned in the heart of Old Westminster within a sought-after purpose-built block this charming three-bedroom apartment is located on the second floor and faces in a westerly direction.

Tufton Street is situated a few minutes from Smith Square and within easy reach of the Palace of Westminster. Transport links are excellent with St James's Park, Westminster, and Victoria nearby.

Features

- Communal Heating/Hot Water
- Two Passenger Lifts
- Second Floor
- Opportunity to Upgrade
- Share of Freehold
- Period Building



Tufton Street, SW1P

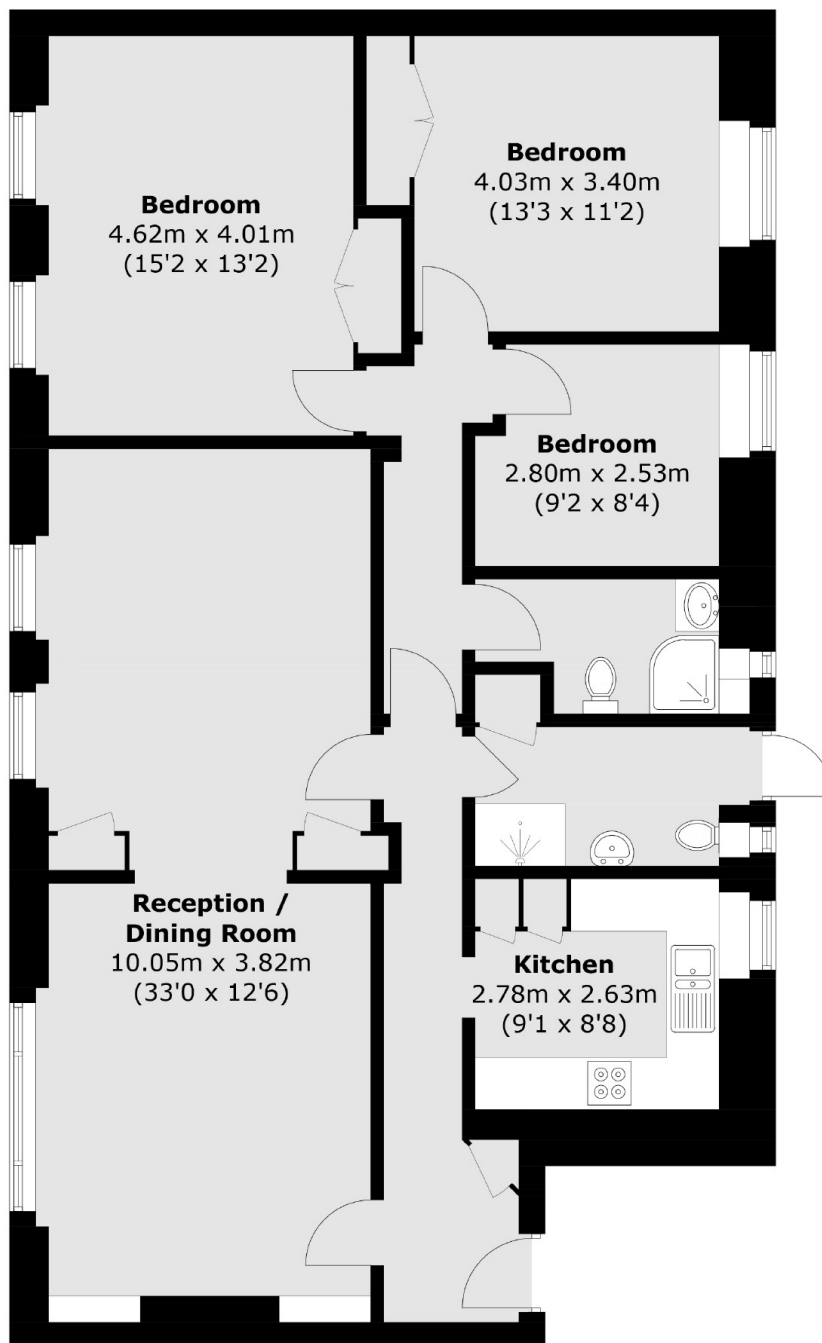
Tufton Court is opposite the Emmanuel Church and so the front rooms of the apartment are not overlooked. The reception and dining room are interconnecting offering wonderful entertaining space.

The kitchen is a good size with plenty of storage, there are three roomy bedrooms and two have large fitted wardrobes. There are two modern bathrooms, one has access to the fire escape. The apartment is nicely presented but also offer the opportunity to upgrade.

There is a resident building manager and two passenger lifts, the block has a communal heating and hot water system.



Tufton Street, London, SW1P



Total area (approx.): 111.8 sq. m (1,203.4 sq. ft)