



## John Islip Street, SW1P

£2,600,000

This impressive split-level penthouse apartment is situated across the 11th and 12th floors of the esteemed Cleland House development. Boasting two expansive roof terraces, this property offers breathtaking views of Westminster.

The apartment is located in the well-known Abell & Celand development, which is situated in the heart of Westminster, just moments away from some of London's most historic landmarks. The development offers an array of facilities, including a health spa with a gym and a swimming pool, a 24-hour concierge service, and communal gardens. The apartment also comes with the added bonus of two private car parking spaces.

### Features

- Chain Free
- Two Private Parking Spaces
- Two Roof Terraces
- Bespoke Kitchen
- Breathtaking Views
- 24hr Concierge



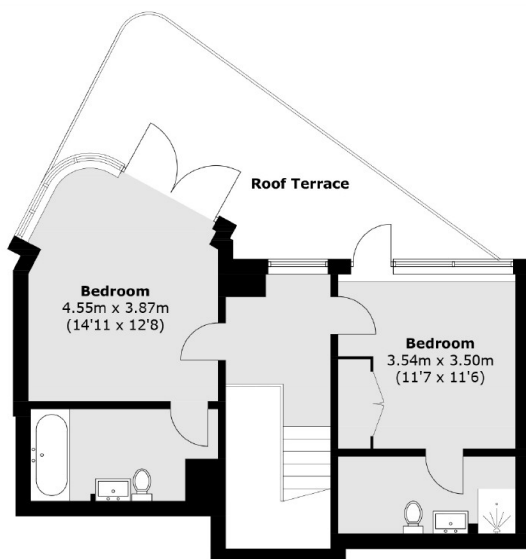
## John Islip Street, SW1P

As you step into this desirable apartment, you'll be greeted by a spacious and stylish open-plan living area that is illuminated by natural light pouring in through the floor-to-ceiling windows. The bespoke Poggenpohl kitchen, which is custom-made and costs £150,000 truly sets this property apart. Poggenpohl is a highly respected German brand that is renowned for its luxury kitchens, combining architectural concepts, design principles, and trendsetting products with outstanding craftsmanship and technical precision.

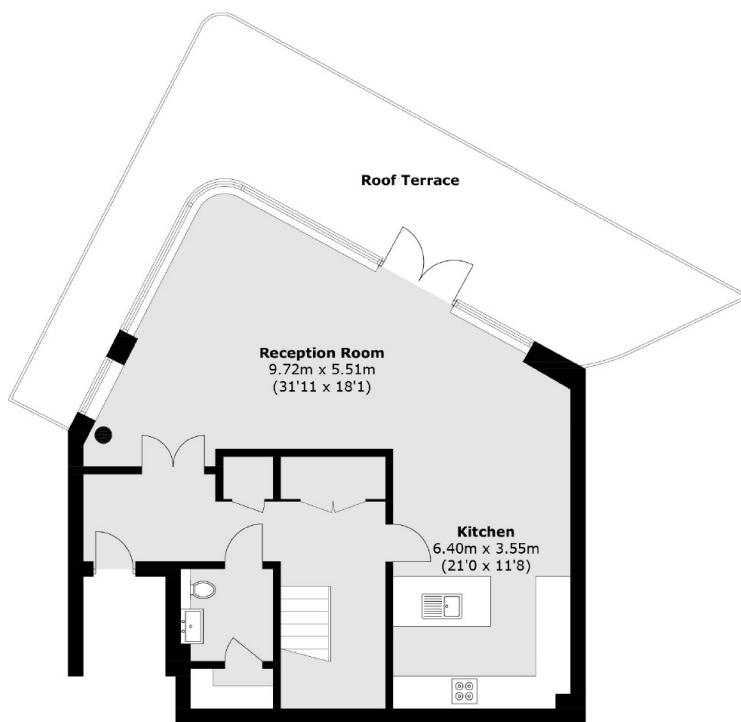
The apartment features two generously sized bedrooms, each with its own en-suite bathroom that boasts a luxurious marble finish and fine white porcelain suites. The bedrooms come equipped with generous built-in storage that doesn't detract from the overall space of the room, while LED downlighters and polished chrome fittings add a touch of sophistication to the space.



John Islip Street,  
London, SW1P



**Twelfth Floor**



**Eleventh Floor**

Total area (approx.): 131.3 sq. m (1,413.3 sq. ft)  
Roof Terrace (approx.): 57.7 sq. m (621.1 sq. ft)