



Hugh Mews, SW1V

£975,000

Positioned in a private mews this is a rare opportunity to acquire a charming mews house with lots of character. Located in Pimlico on the border of Belgravia.

Hugh Mews is a short distance from the boutique shops and well-known restaurants that can be found on Elizabeth Street. Transport links are excellent with Victoria transport hub nearby.

Features

- Freehold
- Private Mews
- Patio
- Vaulted Ceiling
- Juliet Balcony
- Parking



Hugh Mews, SW1V

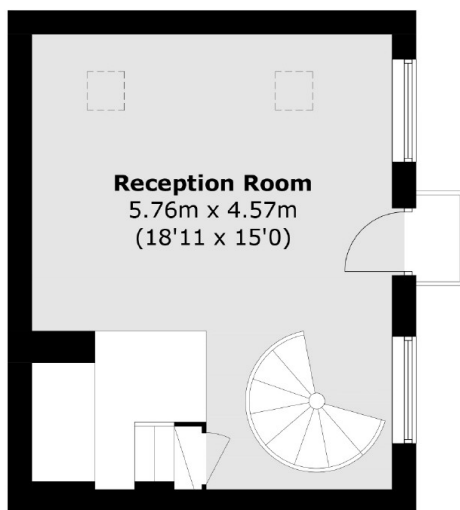
This pretty mews house is set within a delightful cobbled mews just off Hugh Street, as a private mews there are no parking restrictions and so residents have the right to park near their property.

Set out over three floors, the spacious fully fitted kitchen with a delightful open plan dining room is positioned on the lower ground floor where there is a small patio area.

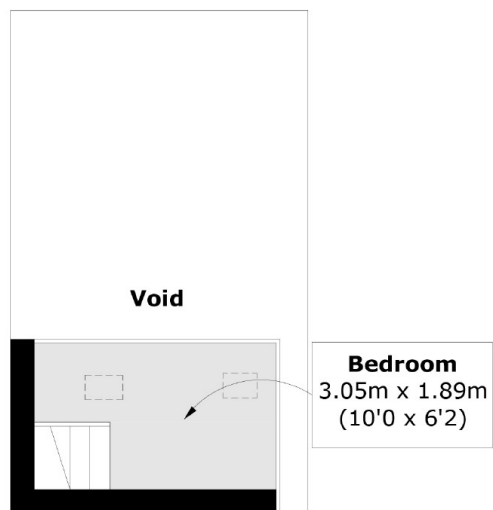
On the ground floor there is a good size bedroom and a nicely fitted bathroom, a spiral staircase leads to the first floor where there is a wonderful reception room with high vaulted ceiling and a Juliet balcony. There is also a mezzanine area with space for a bed.



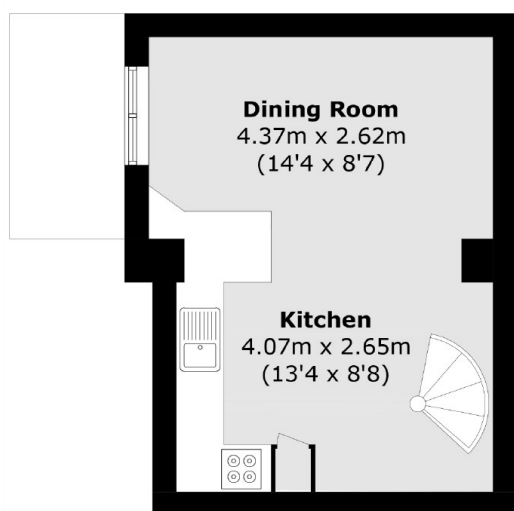
Hugh Mews, London, SW1V



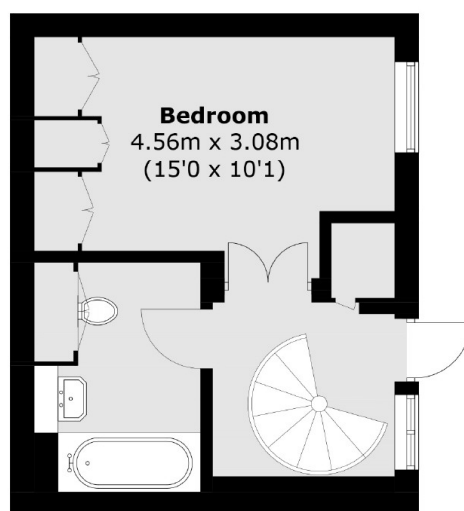
First Floor



Mezzanine



Lower Ground Floor



Ground Floor

Total area (approx.): 82.1 sq. m (883.7 sq. ft)
(Including Mezzanine)