

Longmoore Street, SW1V

£1,045,000

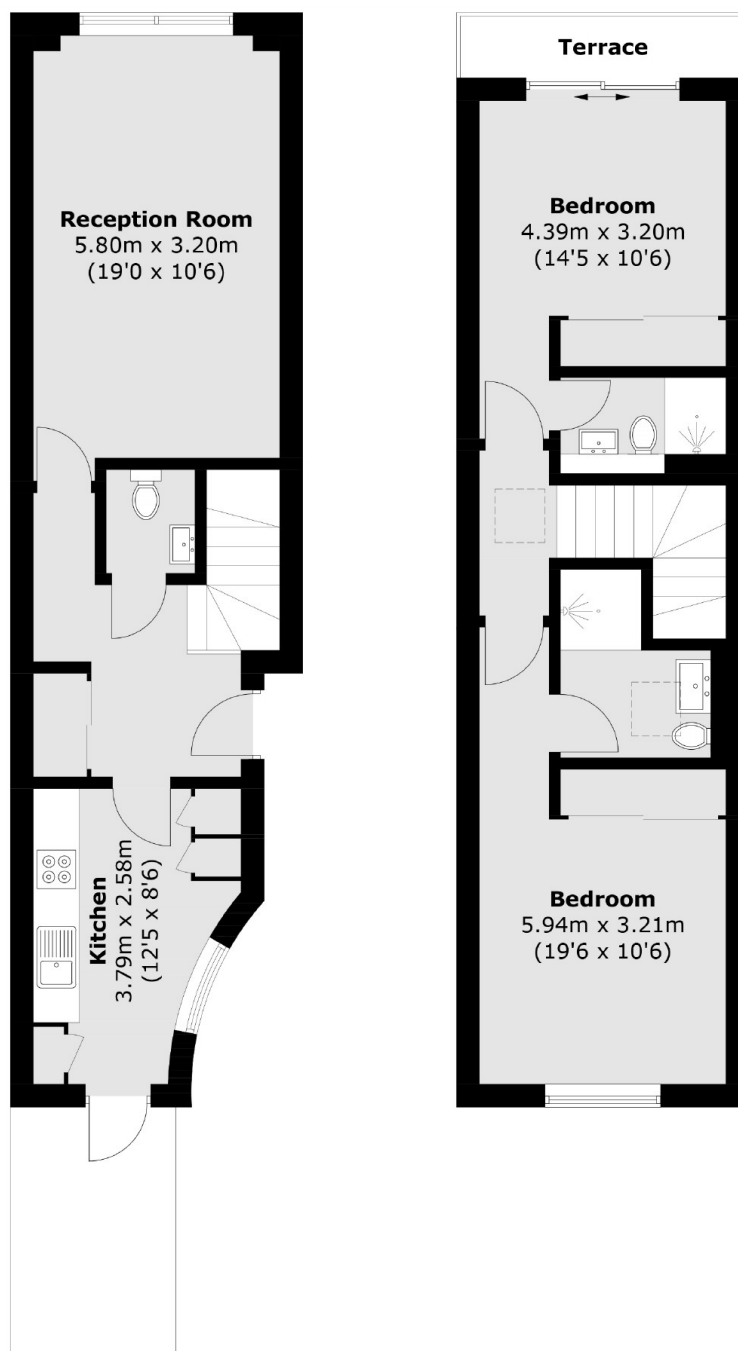
A modern two bedroom duplex maisonette located within the heart of Pimlico. This property benefits from a private south facing patio as well as a communal garden with secure underground parking.

Longmoore Street is in the heart of Pimlico where there are a variety of fashionable restaurants, charming cafés and local shops. Transport links are excellent, Victoria underground and mainline stations are moments away and offer direct links to Gatwick Airport as well as trains to the south and the south east of England.

Features

- Secure Under Ground Parking
- Close To Transport Links
- Solar Thermal Heating
- Duplex Apartment
- Private Patio
- Lift

Longmoore Street, London, SW1V



First Floor

Second Floor

Total area (approx.): 80.8 sq. m (869.7 sq. ft)
Terrace: 3.0 sq. m (32.3 sq. ft)