

Churton Place, SW1V

£1,650,000

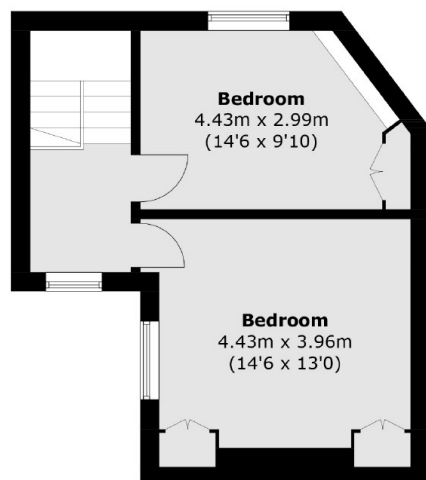
This is a freehold townhouse located in a prime central area, situated in a peaceful cul-de-sac. The property features a spacious reception room and cloakroom on the ground floor, while the kitchen and dining area are located on the lower ground floor. Upstairs, there is a double bedroom with an en-suite bathroom on the first floor, along with a separate family bathroom. On the second floor, there are two additional double bedrooms, providing ample space for a family or guests.

Churton Place is a cul de sac quietly located just off Churton Street, convenient for the many local amenities and the transport links at both Victoria and Pimlico stations.

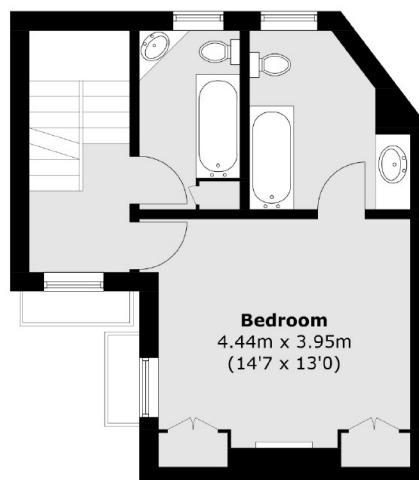
Features

- Freehold House
- Unique Location
- Three Double Bedrooms
- No Chain
- Private Garden

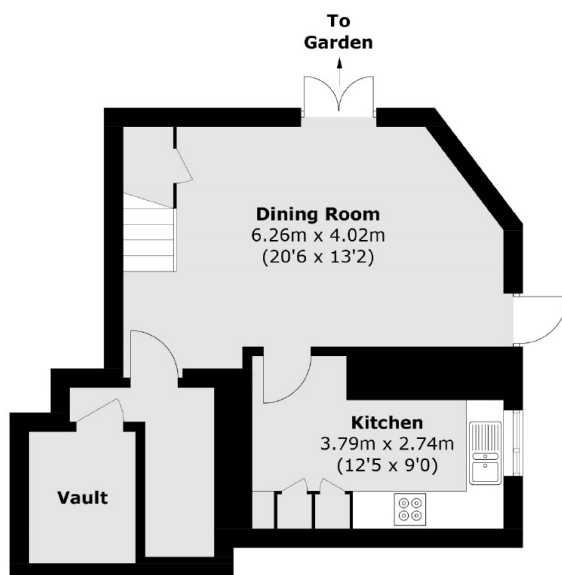
Churton Place, London, SW1V



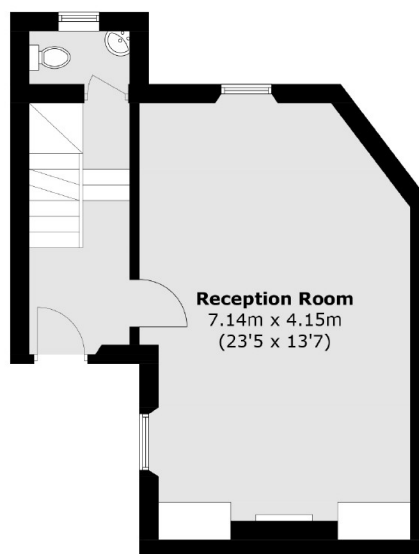
Second Floor



First Floor



Lower Ground Floor



Ground Floor

Total area (approx.): 148.7 sq. m (1,600.6 sq. ft)