



## Montaigne Close, SW1P

£600,000

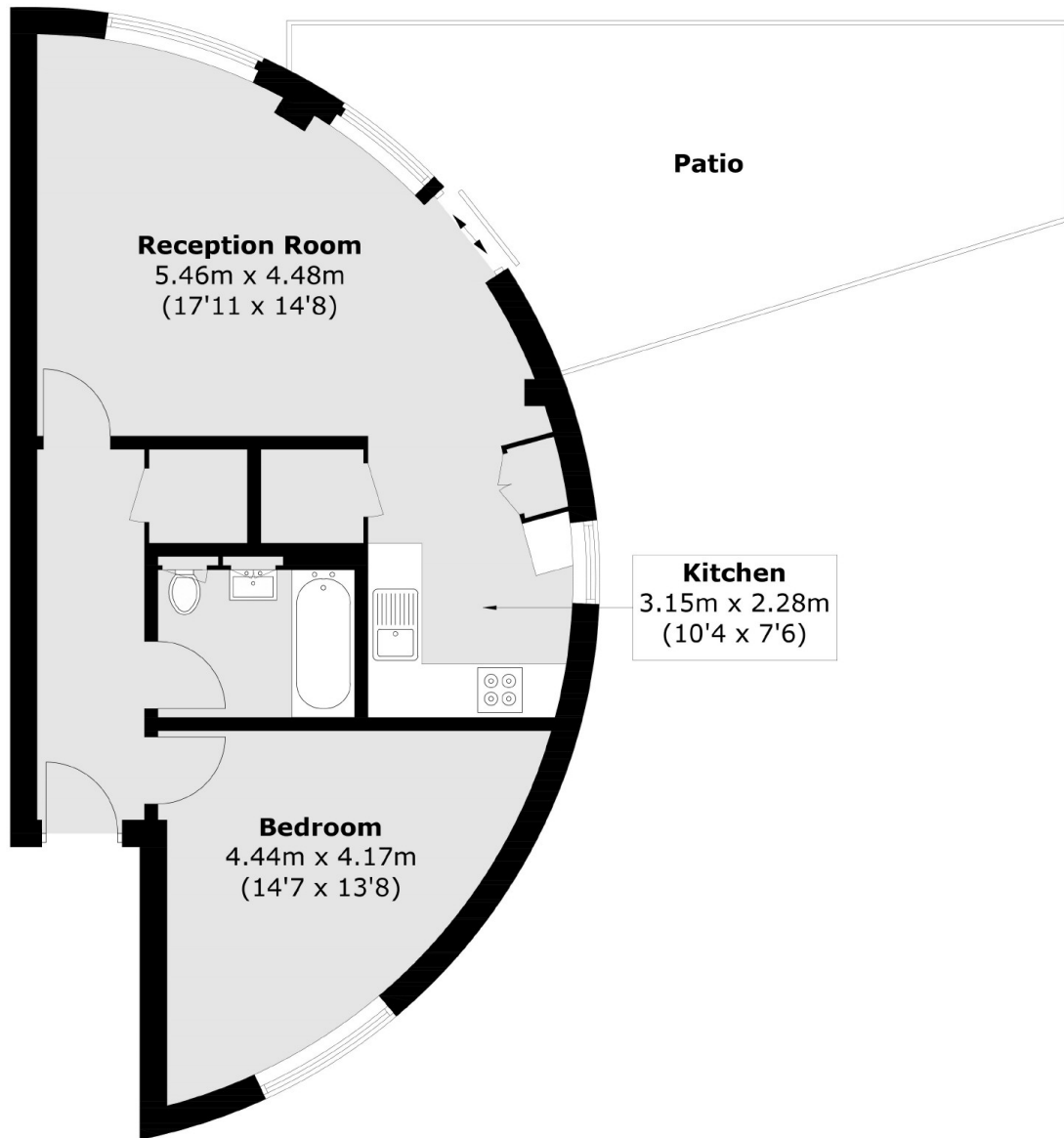
Situated on the ground floor in a secure modern development with 24-hour concierge service, leisure suite with Gymnasium, Jacuzzi, Sauna and Steam Room, this spacious one-bedroom apartment has access to a large private terrace.

Montaigne Close is positioned well for easy access to Victoria transport hub and Pimlico, St James' Park, and Westminster Tube. A variety of fashionable shops, bars and restaurants can be found on nearby Victoria Street and in Pimlico.

### Features

- Private Terrace
- Secure Parking
- Leisure Suite
- 24-Hour Concierge
- Ground Floor
- Long Lease

# Montaigne Close, London, SW1P



Total area (approx.): 52.6 sq. m (566.2 sq. ft)