



Chapter Street, SW1P

£650,000

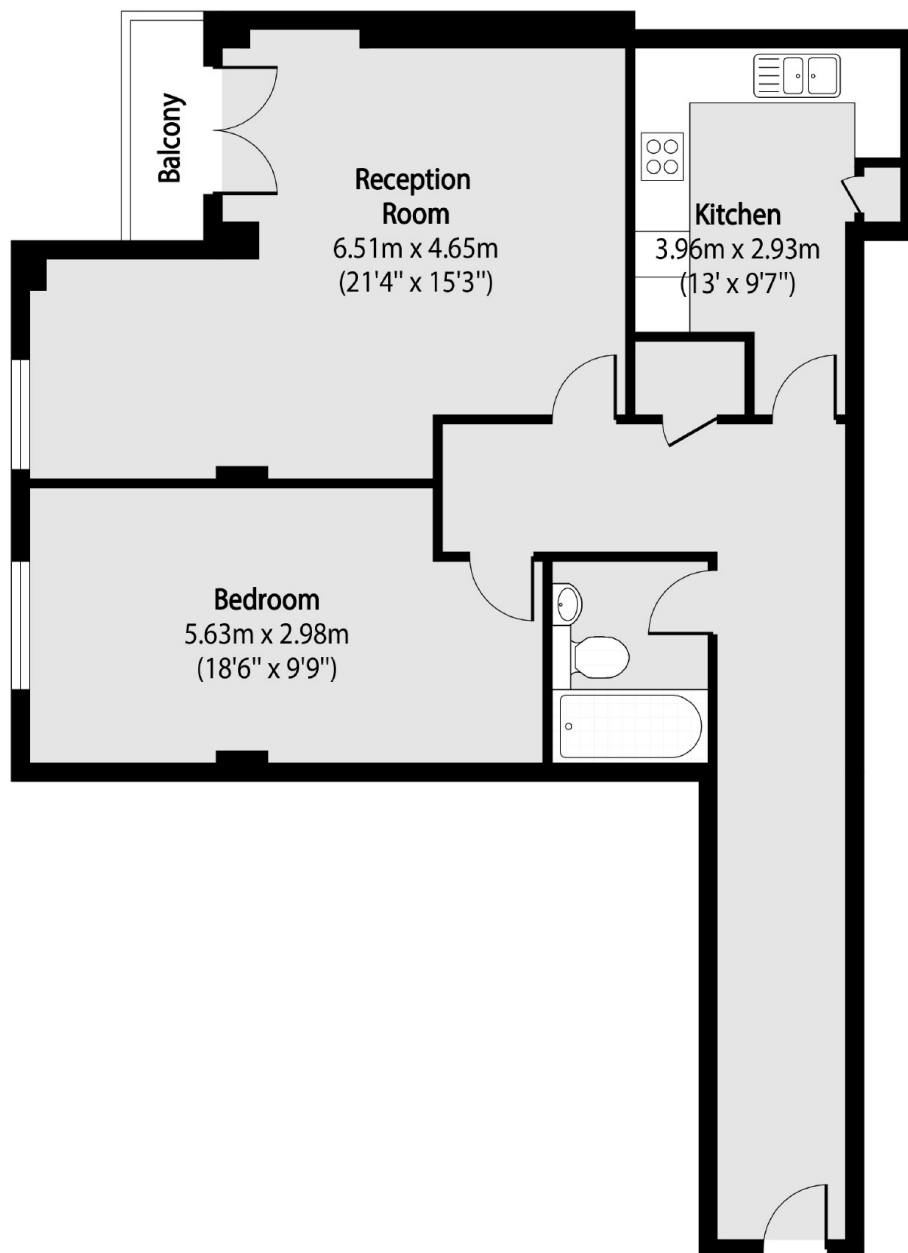
A large one bedroom apartment located on the fourth floor (with lift). This apartment has recently been renovated to a high standard throughout. Benefiting from ample amounts of natural day light, porter and secure underground parking.

Located in the prestigious Westminster close to Vincent Square, Chapter Street is a few moments walk from Pimlico Underground Station, and within easy reach of Victoria Mainline Station.

Features

- Secure Parking Space
- Communal Courtyard
- Share Of Freehold
- Balcony
- Porter
- Lift

Chapter Street, London, SW1P



Total area (approx): 73.01 sq m (786 sq. ft)

Balcony total area (approx): 1.92 sq m (21 sq. ft)