



## Chapter Street, SW1P

£785,000

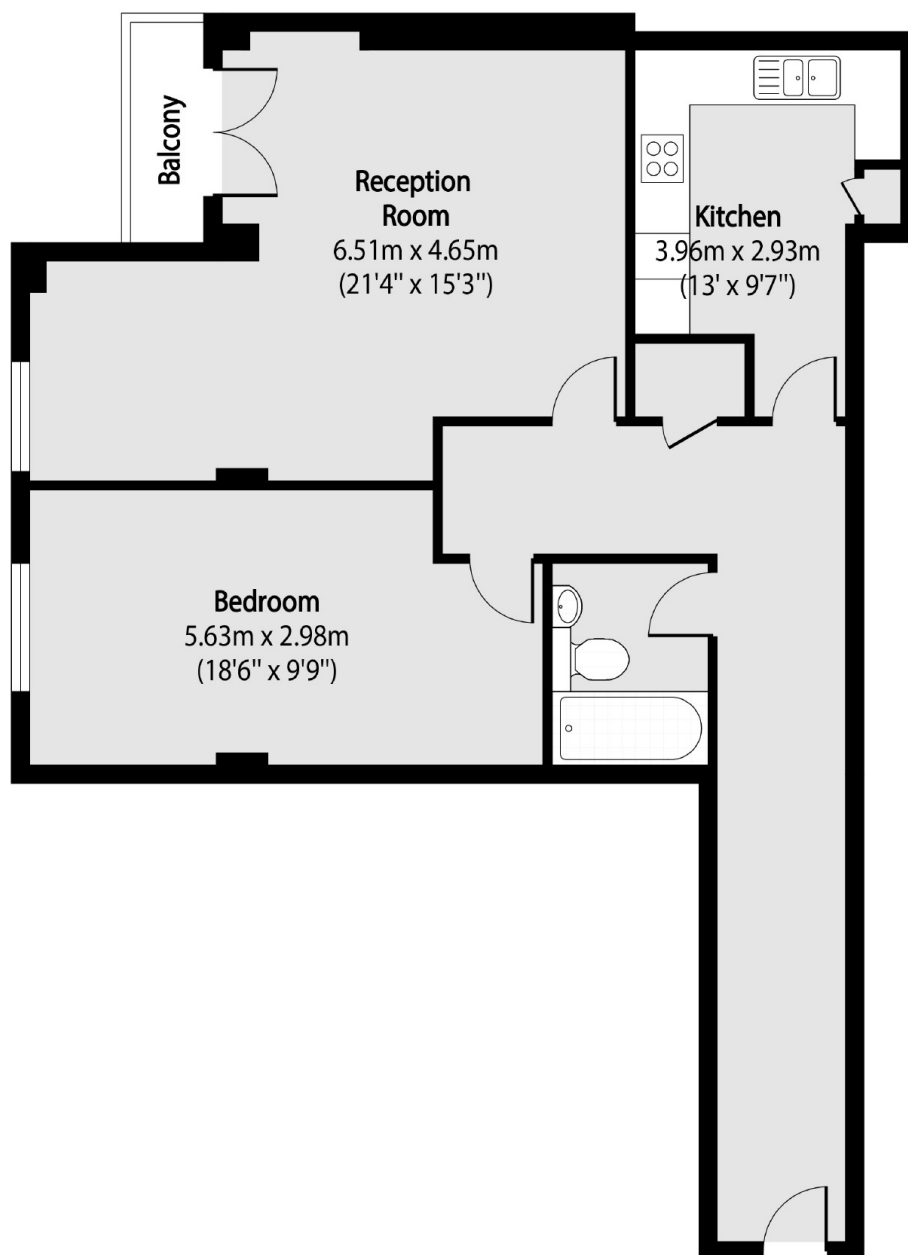
A spacious one bedroom apartment located on the fourth floor (with lift). This apartment benefits from lots of natural day light, a porter and secure underground parking.

Located close to Vincent Square, Chapter Street is a few moments walk from Pimlico Underground Station, and within easy reach of Victoria Mainline Station.

### Features

- Secure Parking Space
- Communal Courtyard
- Share Of Freehold
- Balcony
- Porter
- Lift

# Chapter Street, London, SW1P



Total area (approx): 73.01 sq m (786 sq. ft)

Balcony total area (approx): 1.92 sq m (21 sq. ft)