



Page Street, SW1P

£600,000

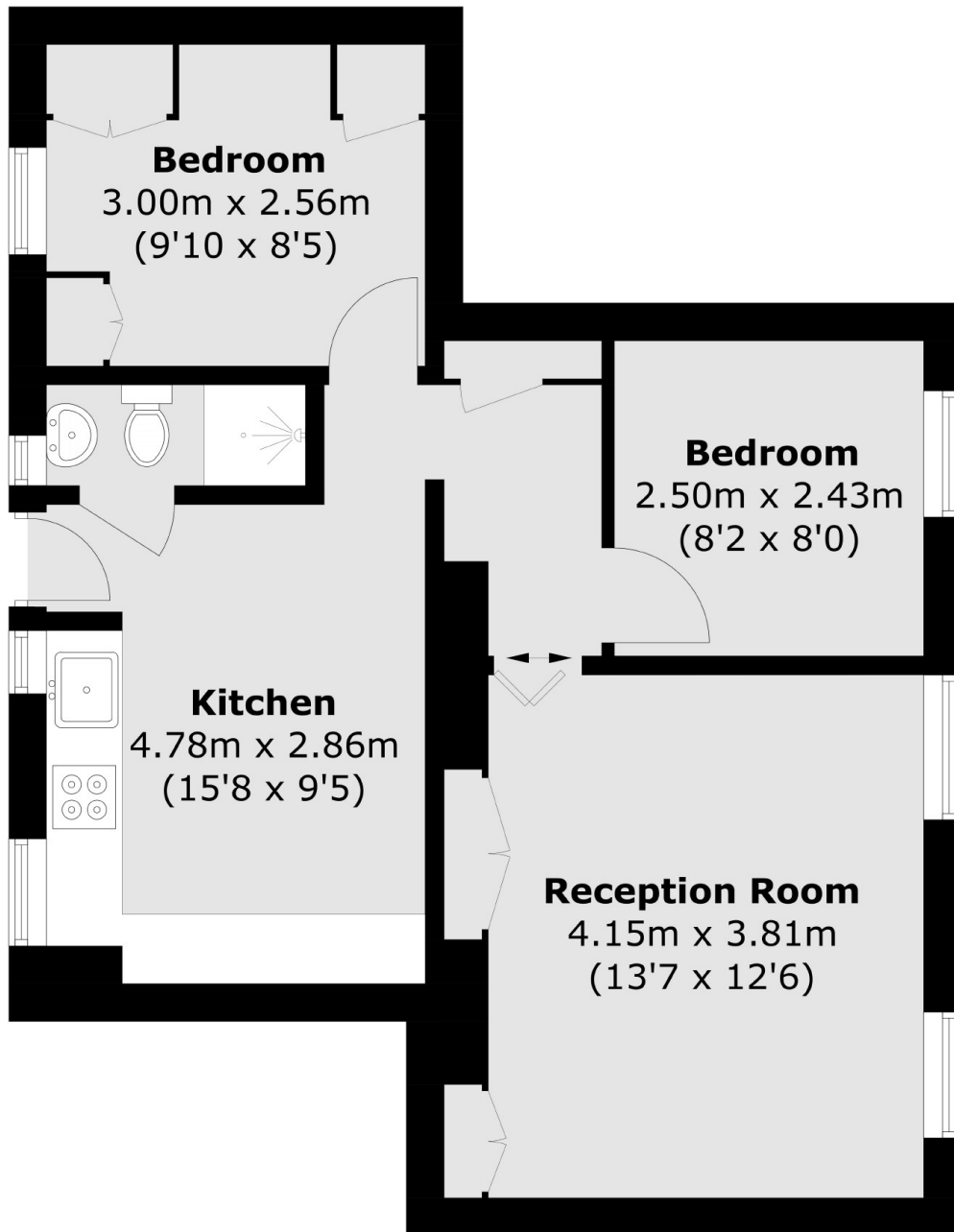
A well presented ground floor apartment located in the heart of Westminster. This property benefits from two double bedrooms and is situated in a Grade II listed residential building, that was designed by Sir Edward Lutyens in 1930s.

Page Street is centrally located close to transport links from St James's Park, Westminster and Victoria Stations and is within walking distance to the shops bars and cafe's on Victoria Street.

Features

- Communal Courtyard
- Two Double Bedrooms
- Separate Kitchen / Reception
- Gated Entrance
- Convenient Location
- Ground Floor

Page Street,
London, SW1P



Total area (approx.): 49.1 sq. m (528.5 sq. ft)

Dexters

Westminster
50 Churton Street
London
SW1V 2LP
Sales
020 7590 9570

Energy Rating: C. We aim to make our particulars both accurate and reliable. However they are not guaranteed; nor do they form part of an offer or contract. If you require clarification on any points then please contact us, especially if you're traveling some distance to view. Please note that appliances and heating systems have not been tested and therefore no warranties can be given as to their good working order.

 **RICS** | Regulated
Estate Agent
and Letting Agent

dexters.co.uk