



Chapter Street, SW1P

£675,000

A bright and well presented two double bedroom, two bathroom flat on the ground floor of a purpose built building with the added benefit of secure underground parking.

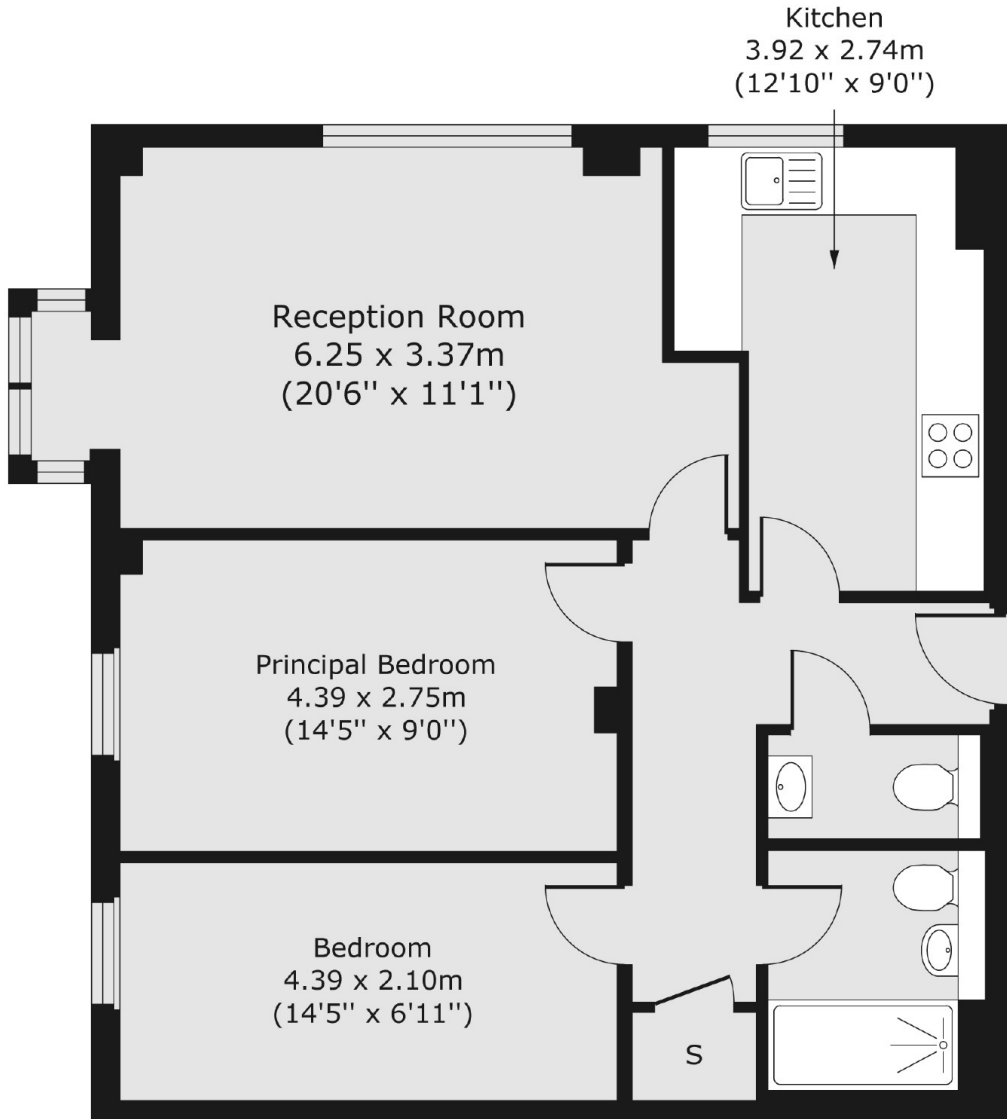
Located in the prestigious Westminster close to Vincent Square, Chapter Street is a few moments walk from Pimlico Underground Station, and within easy reach of Victoria Mainline Station.

Features

- Two Double Bedrooms
- Underground Parking
- Low Service Charge
- Two Bathrooms
- Ground Floor
- Quiet Location

Chapter Street,
London, SW1P

Ground Floor



Total area (approx.) 65.22 sq. m (702 sq. ft)