



Douglas Street, SW1P

£565,000

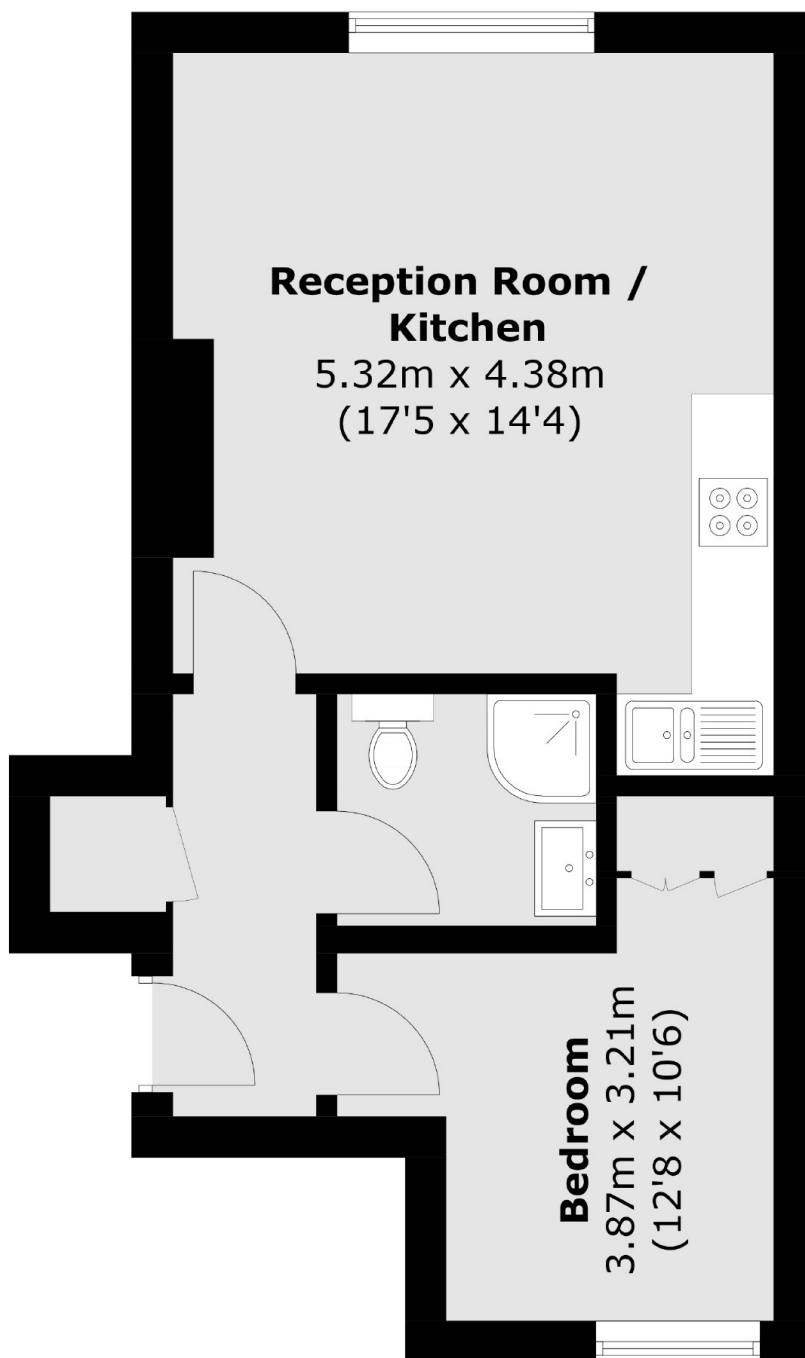
This is a well-maintained one-bedroom apartment on the second floor of a mansion block, situated near Vincent Square. The apartment is beautifully finished to a high standard and comes with an open-plan kitchen and reception room, a double bedroom with built-in cupboards, and a shower room. The property is perfect for use as a pied-a-terre.

Alice House is located on Douglas Street, offering a perfect location for easy access to Victoria station, which provides multiple transport links including coaches, underground, Gatwick express, and trains to the South Coast. Pimlico Underground and the shops and amenities of Wilton Road are just a short walk away.

Features

- One Double Bedroom
- Share Of Freehold
- Quiet Location
- No Chain
- Characterful Building
- Lift

**Douglas Street,
London, SW1P**



Total area (approx.): 38.8 sq. m (417.6 sq. ft)

Dexters

Westminster
50 Churton Street
London
SW1V 2LP
Sales
020 7590 9570

Energy Rating: C. We aim to make our particulars both accurate and reliable. However they are not guaranteed; nor do they form part of an offer or contract. If you require clarification on any points then please contact us, especially if you're traveling some distance to view. Please note that appliances and heating systems have not been tested and therefore no warranties can be given as to their good working order.

 **RICS** | Regulated
Estate Agent
and Letting Agent

dexters.co.uk