

## Lupus Street, SW1V

£745,000

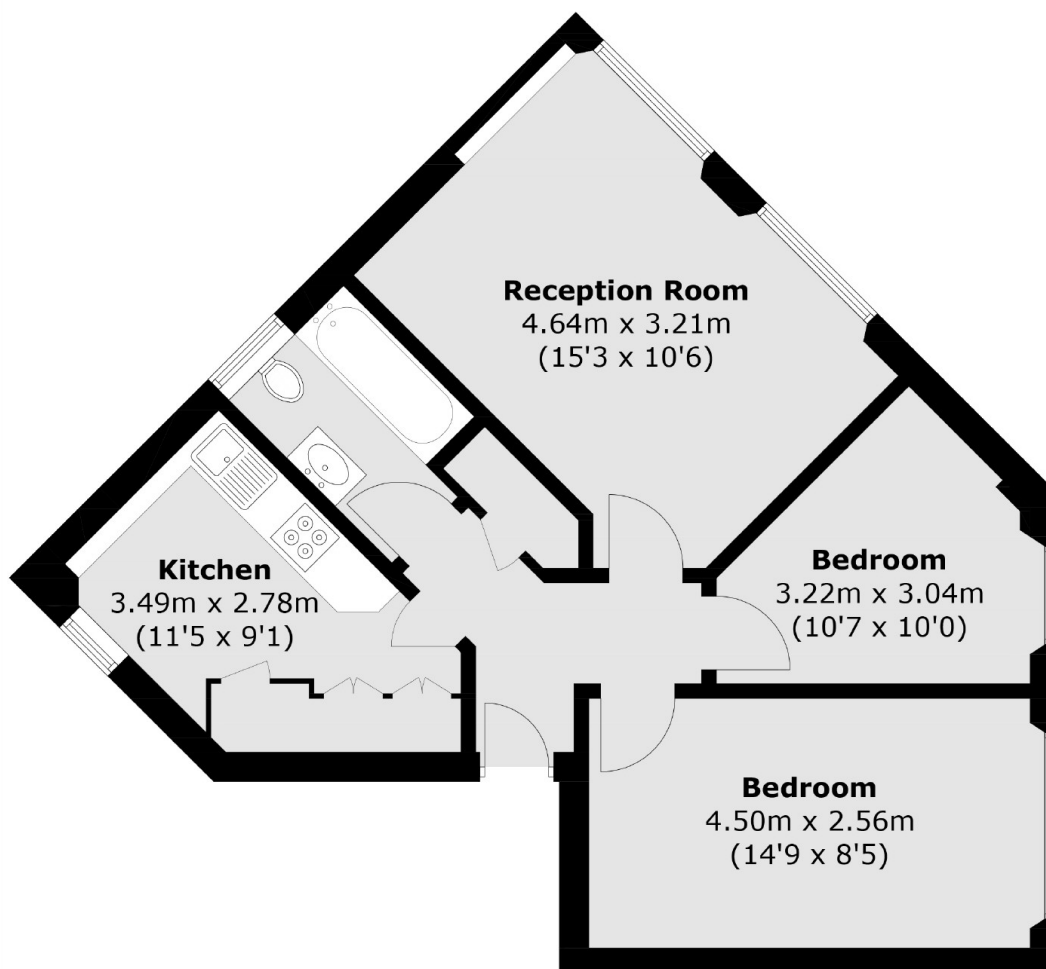
This first-floor period conversion boasts an impressive blend of modern and classic architecture. The property has been well maintained, with two generously sized double bedrooms, and the apartment features ample space for comfortable living.

Situated on the corner of Lupus Street and Alderney Street and conveniently located for local shops, restaurant and transport facilities, Pimlico underground station is within easy walking distance.

### Features

- Two Double Bedrooms
- Excellent Location
- Floor to Ceiling Windows
- No Chain
- First Floor
- Pimlico Primary and Academy close proximity

Lupus Street,  
London, SW1V



Total area (approx.): 54.6 sq. m (587.7 sq. ft)