

Lupus Street, SW1V

£475,000

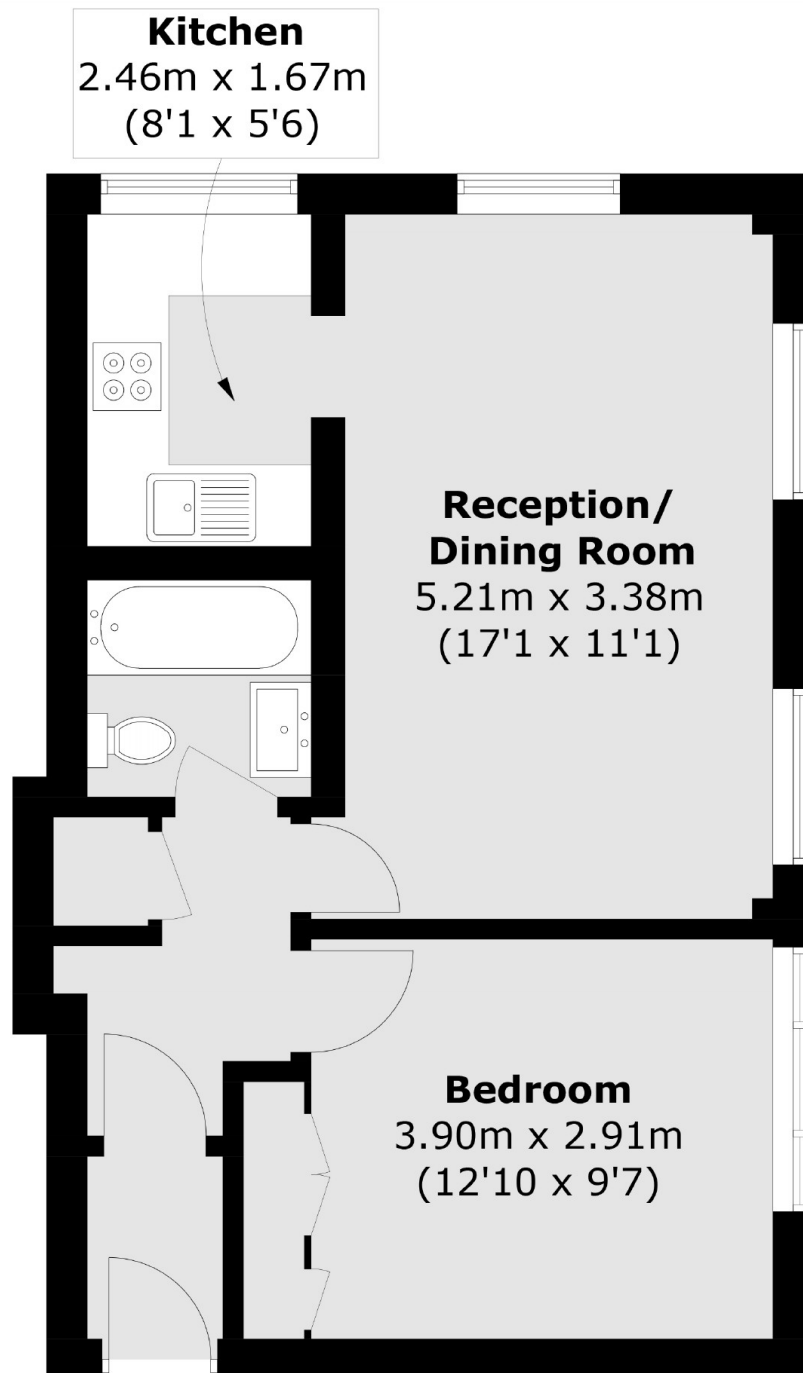
A spacious one-bedroom apartment in a stucco-fronted corner building. Located on the lower ground floor this property offers excellent finishes with a neutral setting and ample storage.

Transport links are excellent with Pimlico Tube and Victoria Transport hub a short distance from the property. An array of fashionable shops and restaurants are to be found in nearby Pimlico and on Victoria Street.

Features

- Share of Freehold
- Excellent Finish
- Shops Close By
- Lower Ground Floor
- Spacious Reception Room
- Close To Transport Links

Lupus Street, London, SW1V



Total area (approx.): 42.4 sq. m (456.4 sq. ft)

Dexters

Westminster
50 Churton Street
London
SW1V 2LP
Sales
020 7590 9570

Energy Rating: D. We aim to make our particulars both accurate and reliable. However they are not guaranteed; nor do they form part of an offer or contract. If you require clarification on any points then please contact us, especially if you're traveling some distance to view. Please note that appliances and heating systems have not been tested and therefore no warranties can be given as to their good working order.

 **RICS** | Regulated
Estate Agent
and Letting Agent

dexters.co.uk