



Tachbrook Street, SW1V

£865,000

A well presented light and spacious maisonette on the first and second floors of this well known development. The excellent size kitchen/dining room and the generous size reception room combine to offer a first class entertaining area and the outside terrace is an added bonus.

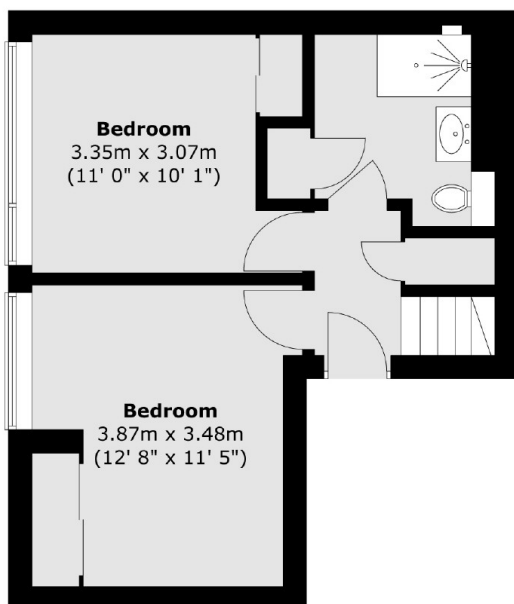
Forsyth House is conveniently located on the Lillington Gardens development between Vauxhall Bridge Road and Tachbrook Street. Nearest public transport can be found close by at Pimlico Underground Station or Victoria Underground, mainline, bus and coach stations providing direct access to The City, West End, Gatwick Airport and beyond.

Features

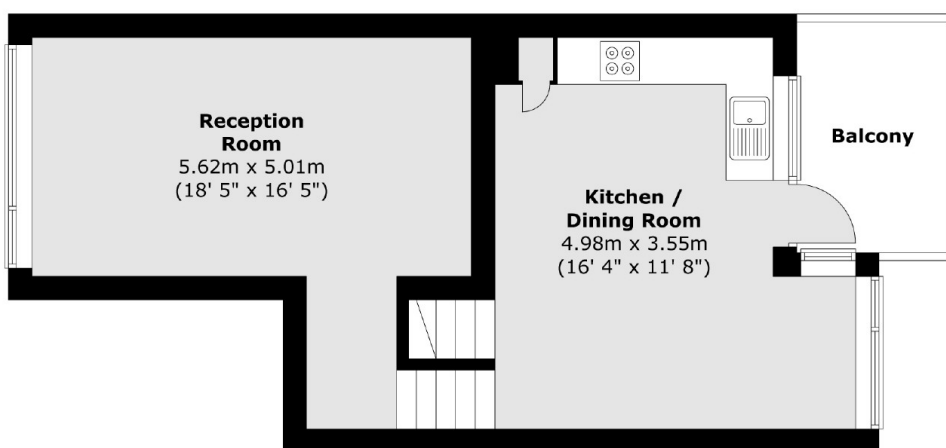
- No Chain
- c. 143 Year Lease
- Split Level
- Private Balcony
- Two Double Bedrooms

Tachbrook Street, London, SW1V

Second Floor



First Floor



Total area (approx.) : 76.4 sq. m (822 sq. ft)
Total balcony area (approx.) : 5.7 sq. m (61 sq. ft)