



Vauxhall Bridge Road, SW1V

£337,000

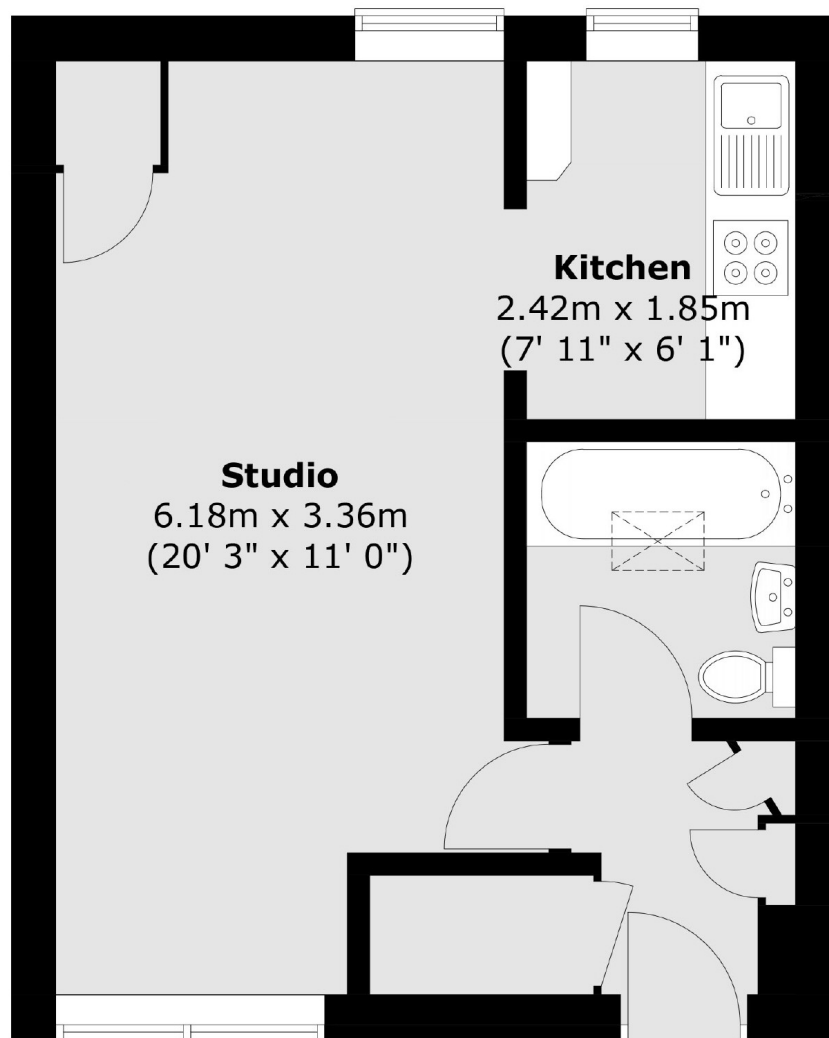
A spacious studio flat situated on the top floor of a purpose-built building with a lift, which is in great condition throughout. The bathroom is freshly refitted and completely brand new. The flat benefits from low monthly running costs.

Tachbrook Street is perfectly located between Victoria and Pimlico Stations, with the cafés and shops of Warwick Way close by. There is a daily Farmers market, in addition to Waitrose, Sainsbury and Tesco Local. Lillington Gardens has won many design awards and is a designated conservation area

Features

Studio
No Onward Chain
Close Proximity To Transport
Light & Bright
Top Floor
Lift

Vauxhall Bridge Road, London, SW1V



Total area (approx.) : 31.1 sq. m (335 sq. ft)