



## Petty France, SW1H

£490,000

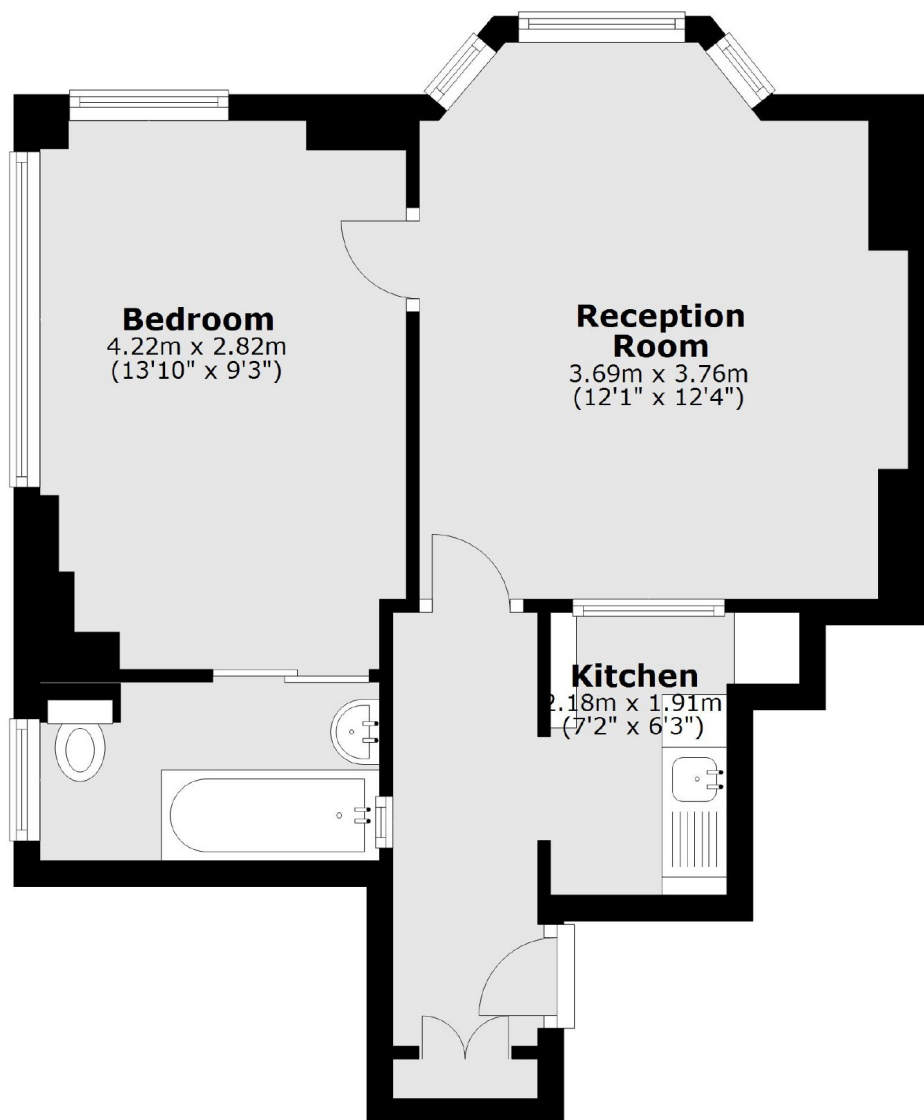
This light one bedroom flat is situated on the third floor in this much sought after purpose-built 1930's portered block, close to St. James's Park, an ideal rental investment or Pied-a-terre.

An excellent location with St James's Park tube station almost on the doorstep. Victoria train and bus terminals just a few minutes away and a variety of shops and restaurants nearby.

### Features

- One Bedroom
- Third Floor
- Communal Heating/Hotwater
- Porter
- Close to St James's Park
- Near Tube Line

# Petty France, London, SW1H



## Third Floor

Total area: approx. 39.2 sq. metres (422.2 sq. feet)