



Palace Street, SW1E

£4,500,000

Located within the heart of Westminster, this spectacular Georgian home is spread over five floors boasting spacious accommodation, natural light and a modern finish.

Set within the Birdcage Walk Conservation area, a magnificent townhouse close to Buckingham Palace and the green open spaces of both Green Park and St James's Park, a wonderful central London location. Transport links are excellent, with Victoria underground and mainline station a short distance from the house with a direct link to Gatwick Airport and trains to the south and the south east. Westminster and St James's Park underground are also within easy reach.

Features

- Five Double Bedrooms
- Three Bathrooms/One WC
- Study
- Patio/Garden Area
- Balcony
- Vault
- Kitchen/Breakfast Room
- Sought After Location



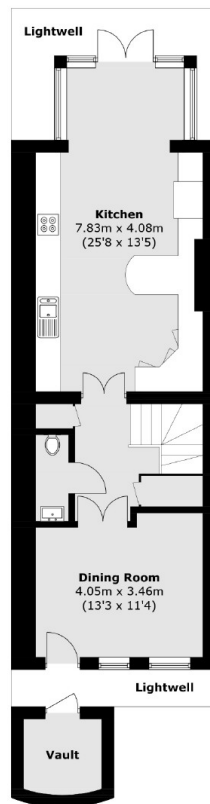
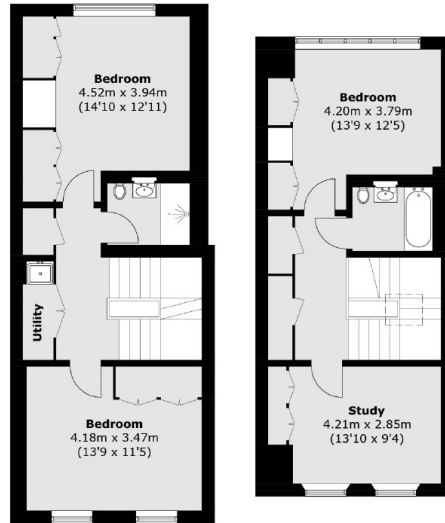
Palace Street, SW1E

Set within walking distance of both St James's park and Victoria train line the property is offered to market with no chain.

Features include a larger than average principle bedroom with en suite bathroom, four further double bedrooms, one bathroom and a shower room, large reception room with a balcony, separate dining room, modern kitchen/breakfast room with access to a garden/patio area, a study, utility area and separate vault.

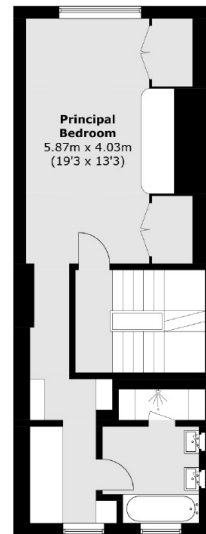
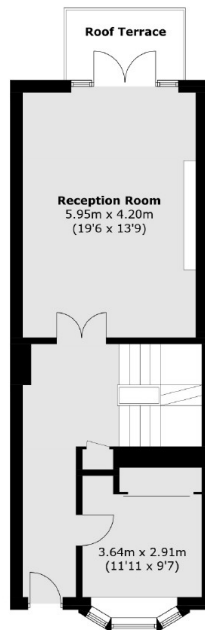


Palace Street, London, SW1E



Second Floor

Third Floor



Lower Ground Floor

Ground Floor

First Floor

Total area (approx.): 254.8 sq. m (2,742.6 sq. ft)

Vault: 3.5 sq. m (37.7 sq. ft)

Roof Terrace: 4.8 sq. m (51.7 sq. ft)