



Dean Ryle Street, SW1P

£1,195,000

This stunning two bedroom apartment with a balcony is situated on the eighth floor and has far reaching views across Westminster. Positioned within a modern development with concierge service and parking.

Dean Ryle Street is located a few minutes from St John's Garden Square and Smith Square. Transport links are excellent with Westminster, St James's Park and Victoria transport hub nearby.

Features

- Concierge Service
- Parking
- Lift
- Gym
- Business Centre
- Spectacular Views



Dean Ryle Street, SW1P

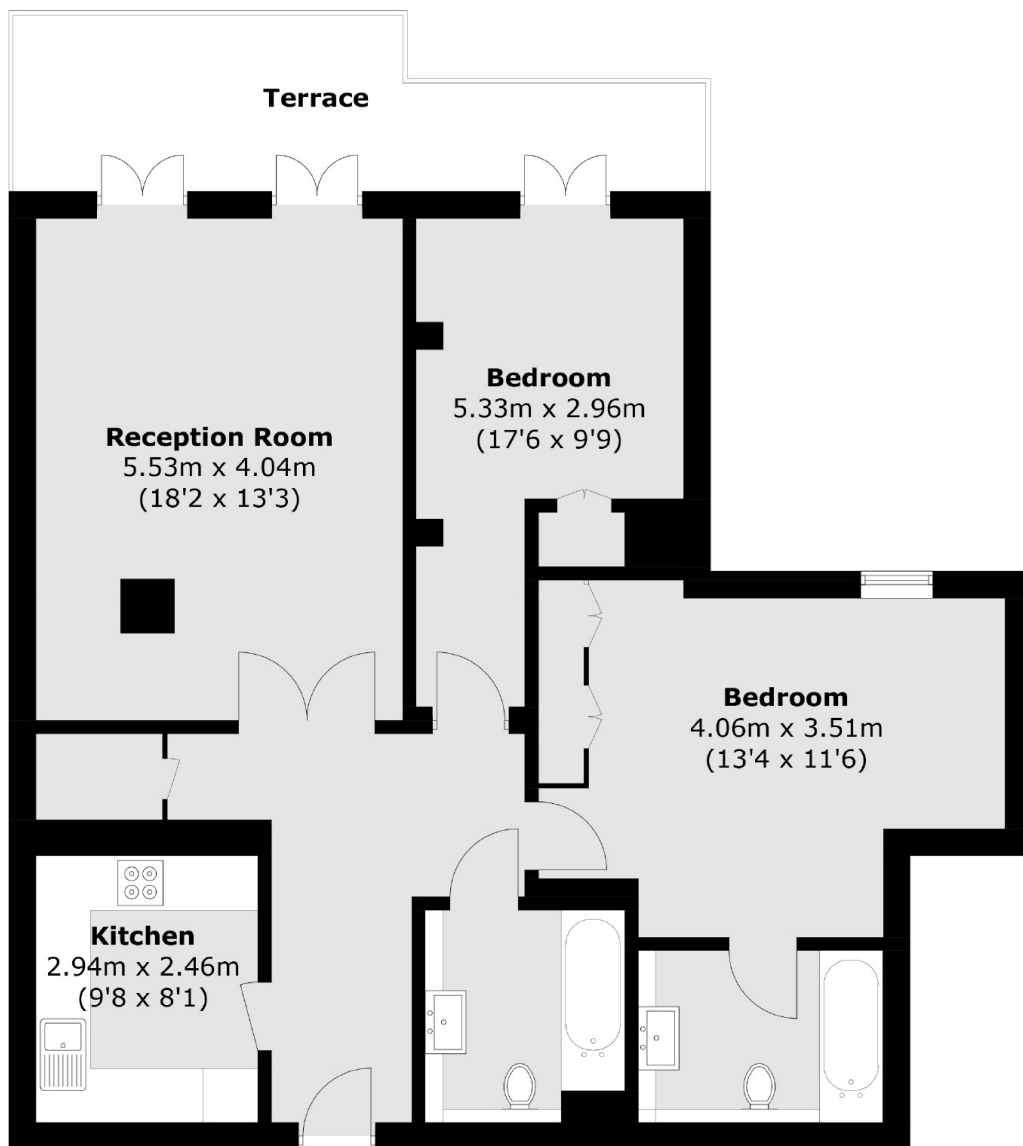
Westminster Green is a prestigious residential development in the heart of Westminster with The Tate Gallery and The Palace of Westminster within easy reach.

The spacious reception room is ideal for entertaining, with two sets of double doors leading on to a good size balcony offering spectacular views. There are two generous size bedrooms with fitted wardrobes, an ensuite bathroom and second bathroom, a large kitchen and ample storage.

The development offers 24 hour concierge service and the opportunity to book the business centre for meeting or entertaining, there is also a gym for residents.



Dean Ryle Street, London, SW1P



Floor area (approx.): 88.2 sq. m (949.4 sq. ft)
Terrace area: 12.4 sq. m (133.4 sq. ft)