

John Islip Street, SW1P

£695,000

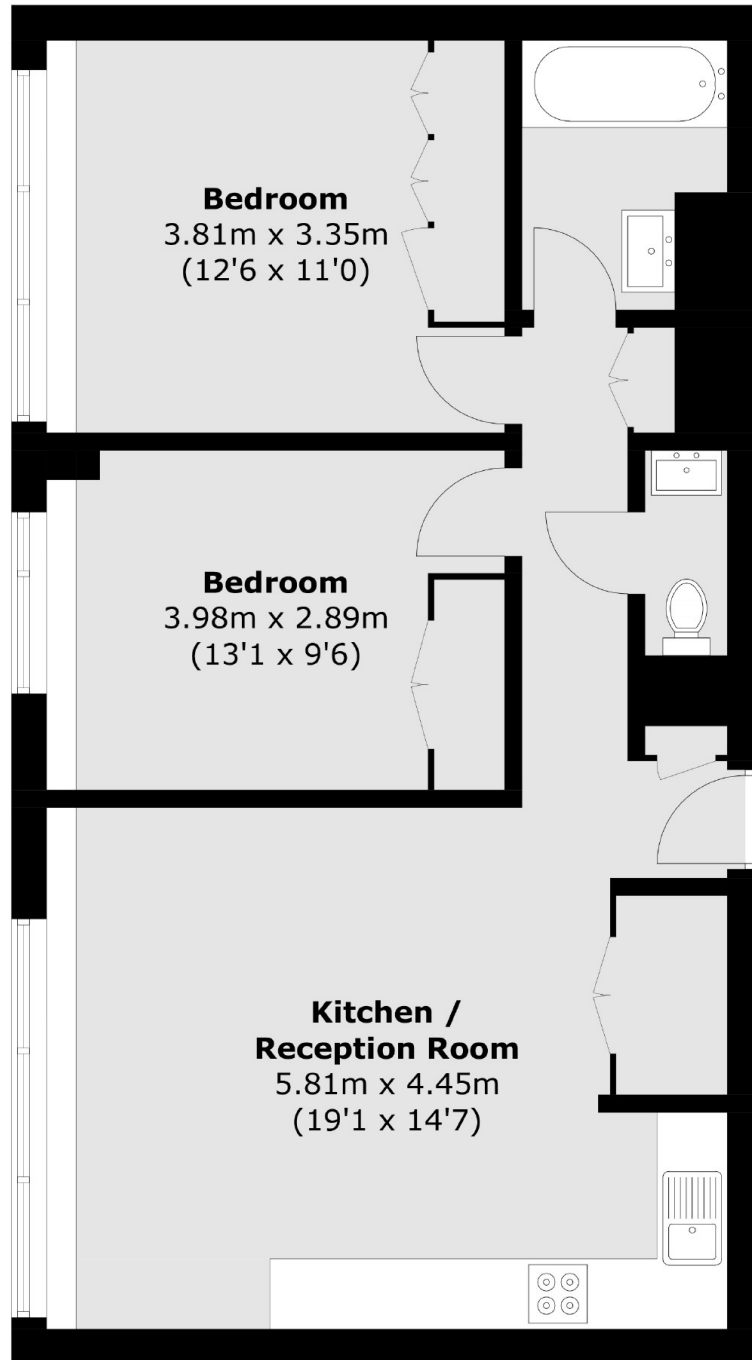
This is a beautiful 2-bedroom apartment, recently renovated to a meticulous standard. It is situated on the second floor of a sought-after purpose-built block on a quiet street in the centre of Westminster. Comprising of two spacious double bedrooms, a family bathroom, and open-plan reception room with a kitchen, and a guest WC. The apartment features wooden flooring throughout and an exceptional communal roof terrace providing views of London's iconic skyline.

Millbank Court is located moments from the River Thames and the Tate Britain gallery, also close by are the green open spaces of Bessborough Gardens and Riverside Walk Gardens which are adjacent to the river. Nearby transport links include Pimlico Underground Station (Victoria line) 0.5 miles. London Victoria Underground Station (Circle, District and Victoria lines) 0.9 miles. London Victoria Station (Gatwick Express, Southeastern and Southern services) 0.9 miles. St. James's Park Underground Station (Circle and District lines) 0.7 miles. Westminster Underground Station (Circle, District and Jubilee lines) 1 mile.

Features

- Off-Street Parking Available
- Private Storage Space
- High Specification Finish
- Two Double Bedrooms
- Concierge
- Lift

John Islip Street, London, SW1P



Total area (approx.): 63.9 sq. m (687.8 sq. ft)