



Marsham Street, SW1P

£635,000

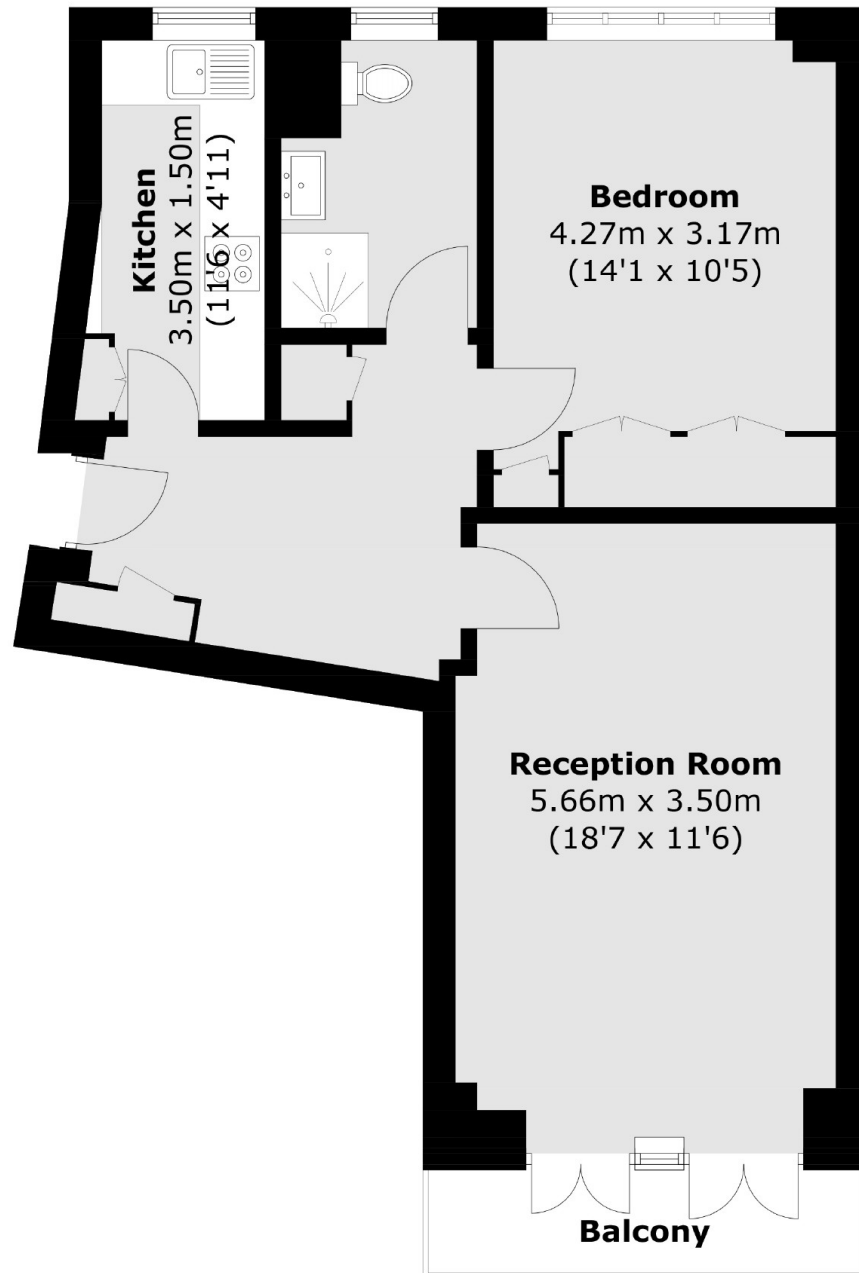
This spacious one bedroom flat with a balcony would make an excellent pied à-terre or central London home. Built in the Art Deco style in the 1930s, the block has communal heating and hot water and 24-hour concierge service.

Marsham Court is located in the heart of Westminster within the 'Division Bell' and a few minutes from The Tate Britain. Transport links are excellent with Westminster, St James's Park Tube and Victoria Station nearby.

Features

- Communal Heating/Hot Water
- 24-Hour Concierge
- Long lease
- Second Floor
- Balcony
- Good Transport

Marsham Street, London, SW1P



Total area (approx.): 54.5 sq. m (586.6 sq. ft)
Balcony : 3.8 sq. m (40.9 sq. ft)