



Carlisle Place, SW1P

£650,000

Positioned within the Westminster Cathedral conservation area this charming one bedroom apartment has high ceilings and pleasing period features. This purpose-built block is reputed to be one of the oldest in this part of Westminster.

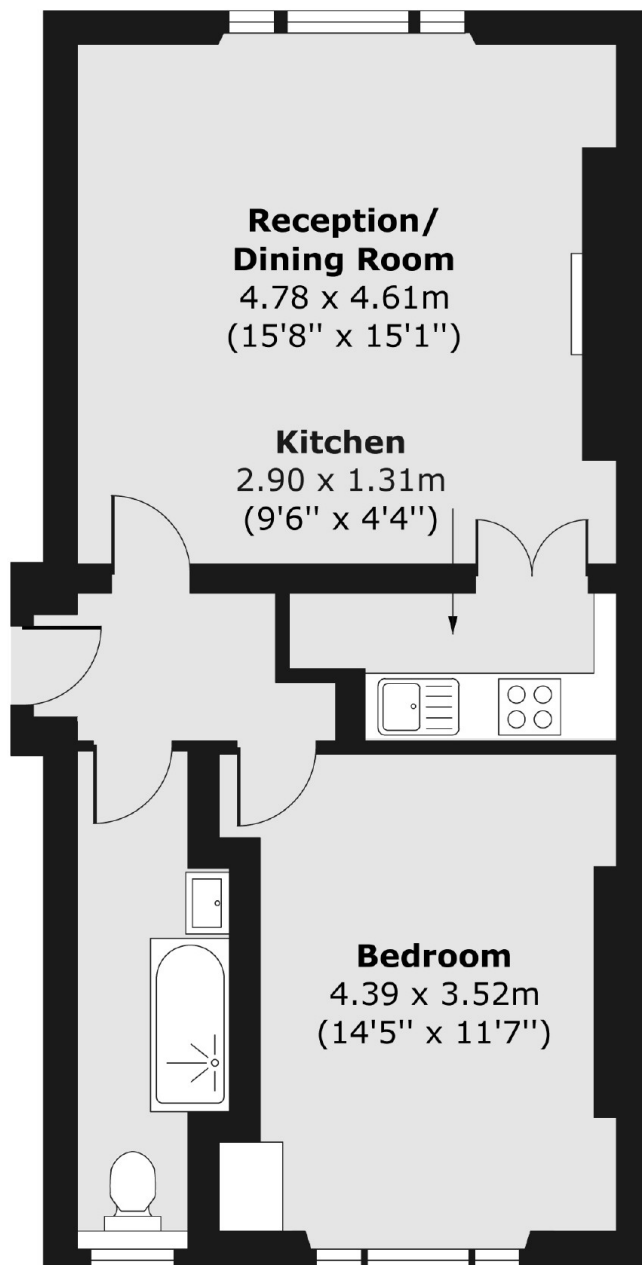
Carlisle Place is a very good location with a variety of fashionable shops and restaurants on Victoria Street. Transport links are excellent with Victoria transport hub nearby with trains to the South East and the Gatwick Express.

Features

- Share of Freehold
- One Bedroom
- Period Features
- Second Floor
- High Ceilings
- Large Windows

Carlisle Place, London, SW1P

Second Floor



Total area (approx.) 51.22 sq. m (551 sq. ft)