



Churchill Gardens, SW1V

£495,000

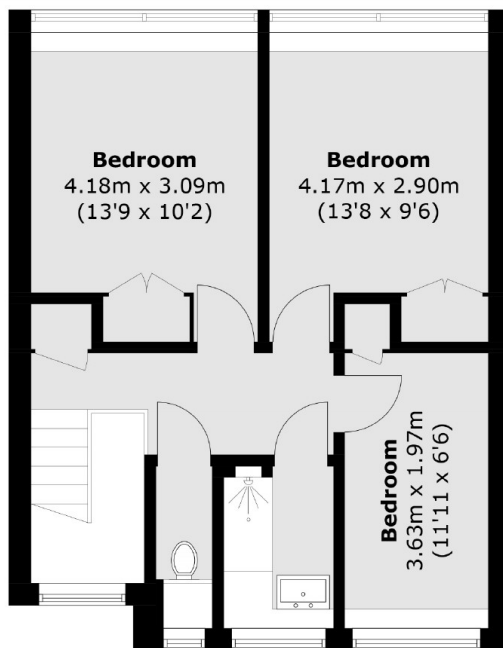
A well proportioned three bedroom maisonette located on the third floor and fourth of Hungerford House. Arranged over two floors and comprising three bedrooms, bathroom, WC and small terrace overlooking the River Thames. The building benefits from a lift, communal heating & hot water.

Churchill Gardens is a popular residential development close to a wide selection of local amenities, within easy reach of the communal gardens of St. Georges Square, as well as nearby Transport links from Pimlico and Victoria Stations.

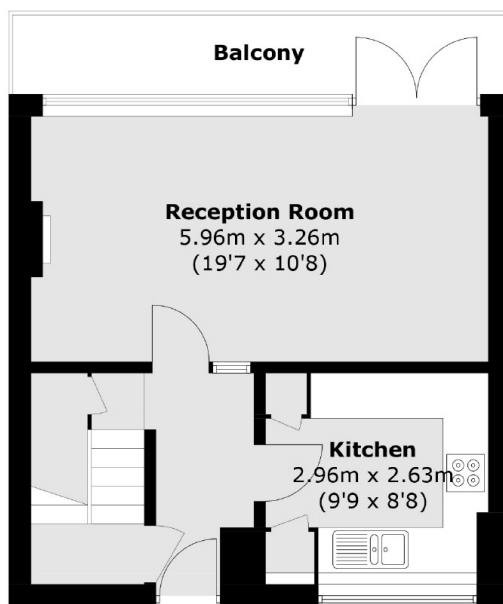
Features

- 55 Year Lease
- No Chain
- Split Level
- Private Balcony
- Three Bedrooms
- Lift

Churchill Gardens, London, SW1V



Fourth Floor



Third Floor

Total area (approx.): 84.5 sq. m (909.5 sq. ft)
Balcony (approx.): 6.9 sq. m (74.2 sq. ft)