



John Islip Street, SW1P

£695,000

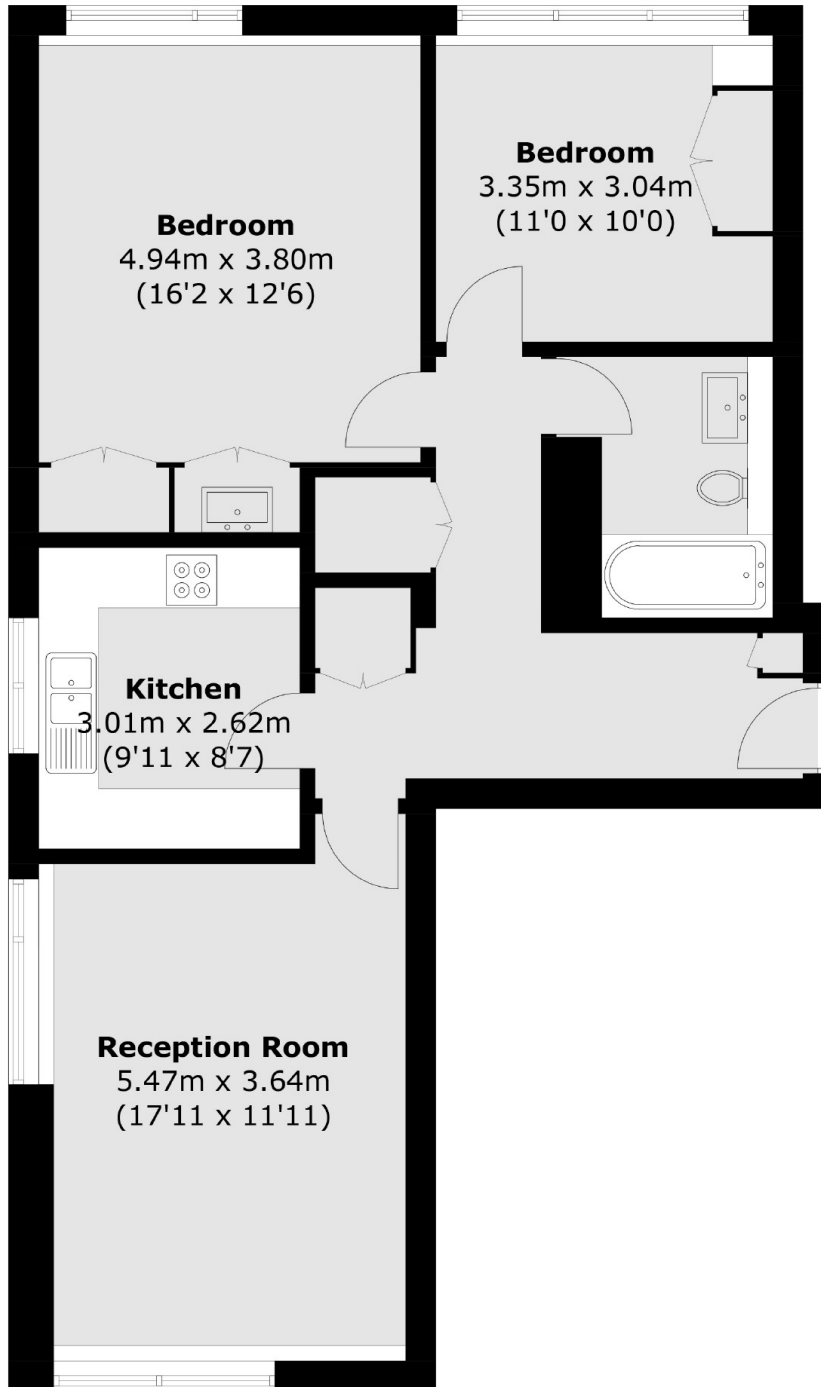
A two-bedroom flat with partial river views in a modern purpose-built block with a 24-hour concierge service, offered to the market with no onward chain.

This is an excellent location; Millbank Court is situated behind The Tate Gallery and transport links are very good with Pimlico and Westminster tube stations nearby.

Features

- Communal Roof Terrace
- Communal Heating /Hot Water
- 24-Hour Concierge
- Two Lifts
- Fifth Floor
- Ad Hoc Parking

John Islip Street, London, SW1P



Total area (approx.): 75.8 sq. m (815.9 sq. ft)