



## Churchill Gardens, SW1V

£550,000

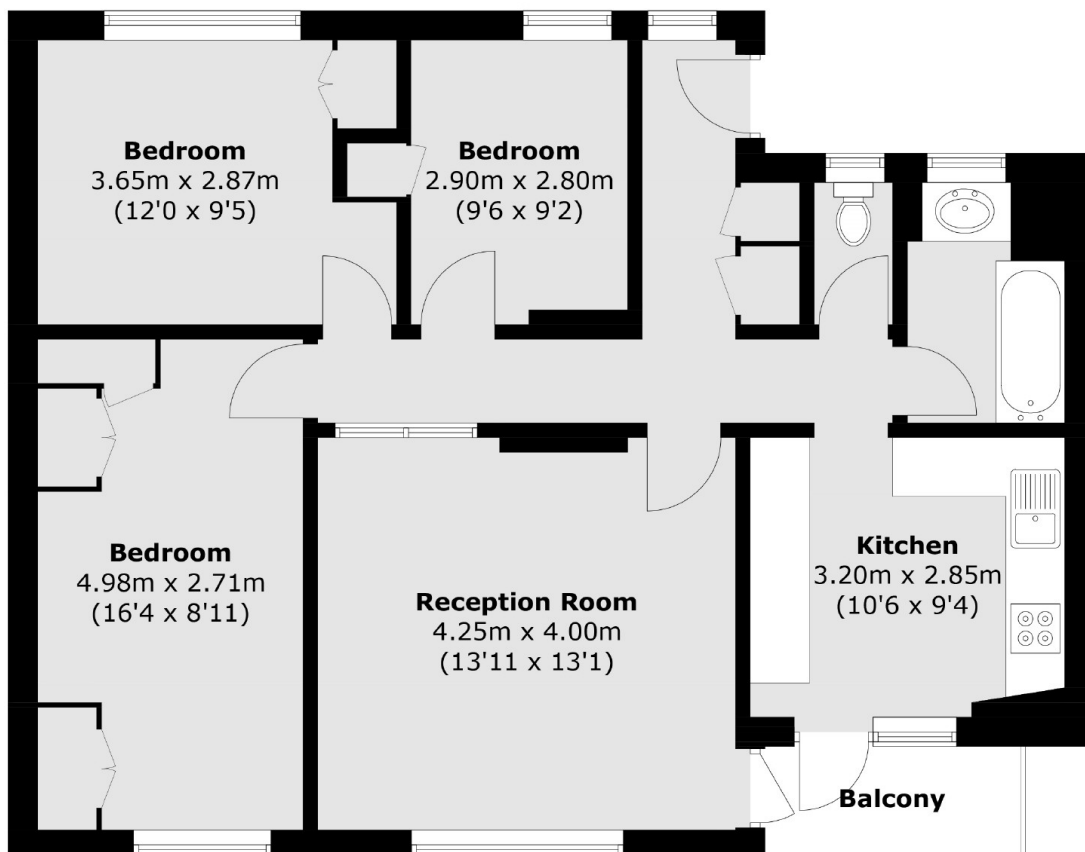
A three-bedroom apartment with no chain, featuring a spacious reception room, separate kitchen and a private balcony with panoramic views of London.

Chaucer House is ideally located close to the River Thames and is within walking distance of the amenities of Pimlico and Westminster. Transport links are close by at either Pimlico or Victoria.

### Features

- Three Double Bedrooms
- No Chain
- Extended Lease on Completion
- Private Balcony
- Lift
- Close to River Thames

# Churchill Gardens, London, SW1V



Total area (approx.): 75.8 sq. m (815.9 sq. ft)  
Balcony area (approx.): 2.9 sq. m (31.2 sq. ft)