



Westmoreland Terrace, SW1V

£2,450,000

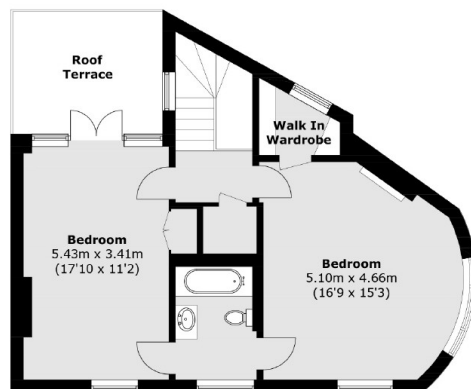
A bright and well laid-out split level conversion, across four floors, in this period building comprising; five bedrooms, four bathrooms, reception room, kitchen, roof terrace and balcony. The property benefits from a convenient location and no onward chain, parking is available on street.

Westmoreland Terrace is well located with easy access to Pimlico Underground Station and Pimlico Road, Sloane Square is also a short walk away.

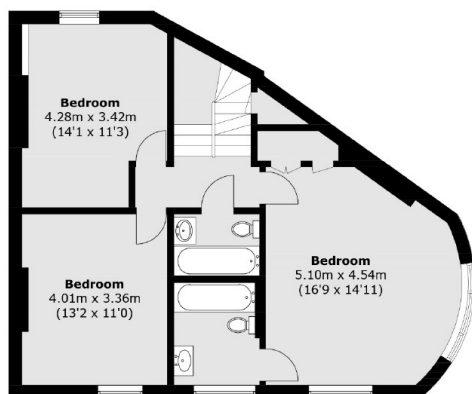
Features

- Five Double Bedrooms
- Own Private Entrance
- Period Features Throughout
- No Onward Chain
- Four Bathrooms
- Roof Terrace

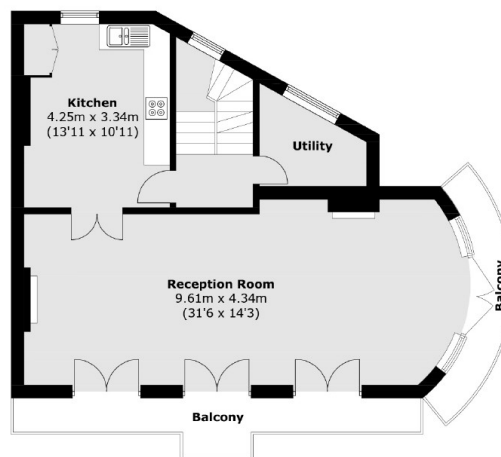
Westmoreland Terrace, London, SW1V



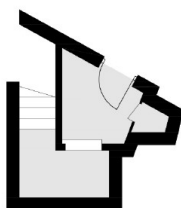
Third Floor



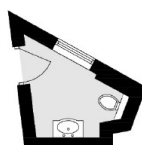
Second Floor



First Floor



Ground Floor



Ground Floor

Total area (approx.): 232.4 sq. m (2,501.5 sq. ft)
 Internal living area (approx.): 209.0 sq. m (2,249.6 sq. ft)
 Balcony & Roof Terrace area: 23.4 sq. m (251.9 sq. ft)