



Ashley Gardens, SW1P
£1,470,000



Ashley Gardens, SW1P

This elegant two-bedroom flat is located in a highly desirable mansion block on the fifth floor and boasts beautiful views from the West-facing balcony of the iconic Westminster Cathedral. The balcony can be accessed from both the principal bedroom and reception room, offering serene views of the communal gardens and Westminster Cathedral. The apartment features bespoke fittings, lighting, and furnishings sourced from Milan by a well-known Italian designer. The presentation of the apartment is immaculate and impressive.

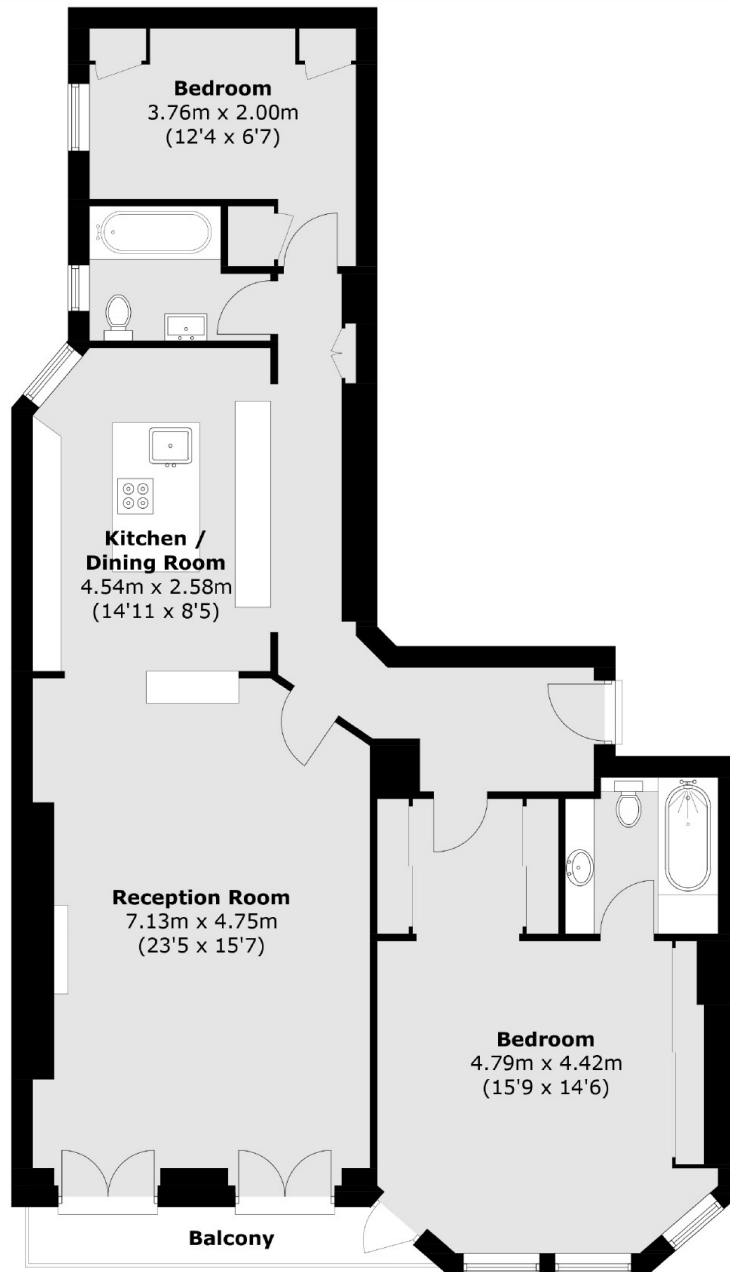
Ashley Gardens is situated in a quiet tree-lined road a few minutes from Westminster Cathedral and bustling Victoria Street with its great variety of shops and the excellent transport facilities that surround Victoria Station.

Features

- Two Bedrooms
- Two Bathrooms (one en-suite)
- Private Balcony
- High Specification Finish
- Lift & Porter
- 5th Floor



Ashley Gardens, London, SW1P



Total area (approx.): 108.3 sq. m (1,165.3 sq. ft)
Balcony: 4.2 sq. m (45.2 sq. ft)

Dexters

Westminster
50 Churton Street
London
SW1V 2LP
Sales
020 7590 9570

Energy Rating: C. We aim to make our particulars both accurate and reliable. However they are not guaranteed; nor do they form part of an offer or contract. If you require clarification on any points then please contact us, especially if you're traveling some distance to view. Please note that appliances and heating systems have not been tested and therefore no warranties can be given as to their good working order.

 **RICS** | Regulated
Estate Agent
and Letting Agent

[dexters.co.uk](https://www.dexters.co.uk)