



## Gloucester Street, SW1V

£1,200,000

A large and well proportioned three double bedroom, two bathroom corner flat with large eat in kitchen and two private patios. The flat has the added benefit of two demised vaults.

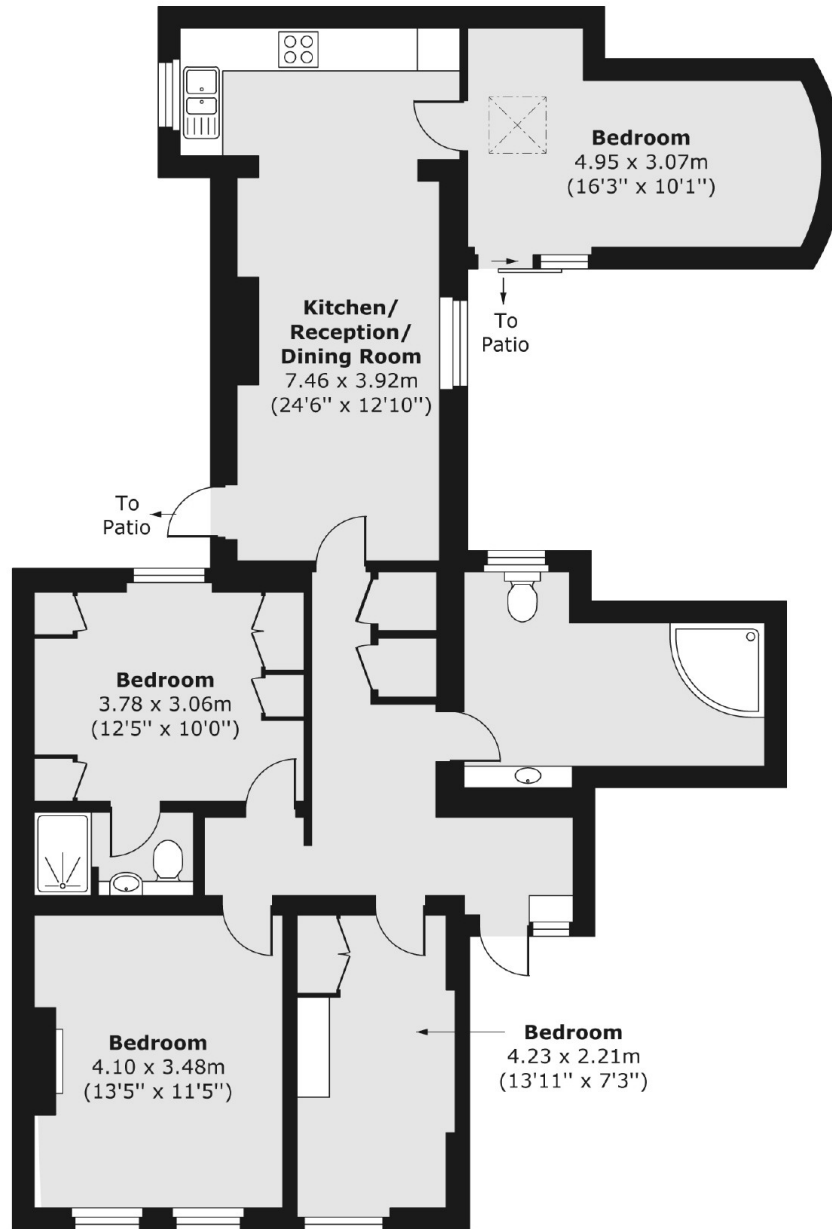
Gloucester Street is situated in the heart of Pimlico. The flat is only a few minutes from the shops and cafes on Wilton Road. Transport is close by at either Pimlico or Victoria Stations.

### Features

- Three Double Bedrooms
- Pimlico Grid
- Share of Freehold
- Central Location
- Close Transport Links
- Refurbishment Opportunity

# Gloucester Street, London, SW1V

Lower Ground Floor



Total area (approx.) 101.62 sq. m (1,094 sq. ft)